

How to Change Selection Criteria on an Inquiry Screen

Please note:

This is an IT function. Some data elements from the specified tables may not be included in the view script. If you want to add a field to the selection criteria on an inquiry, that field must also be in the view script (inqview.sql script). The view script is located in the folder labeled esi\scripts\guitable and is named inqviews.sql. When you upgrade you could lose your modifications. Document your changes. This is a very powerful tool, but must be managed by your IT staff.

Following is an example of the error message that would occur if you tried to add the sofcm_user_6 field to the SO Customer Orders Inquiry as a selection criteria and this data element was not included in the view script.

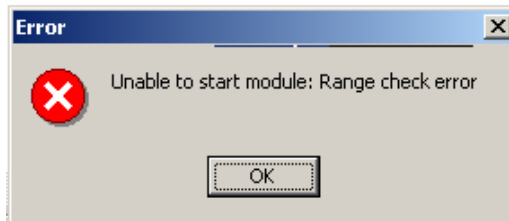
“Error Selecting records from vsoico, field sofcm_user_6 is not found”

Special note about search criteria

Most Inquiries can be customized except for the Summarized Availability Inquiry. This Inquiry has logic that requires custom modifications by Expandable.

How to Change Selection Criteria on an Inquiry Screen continued

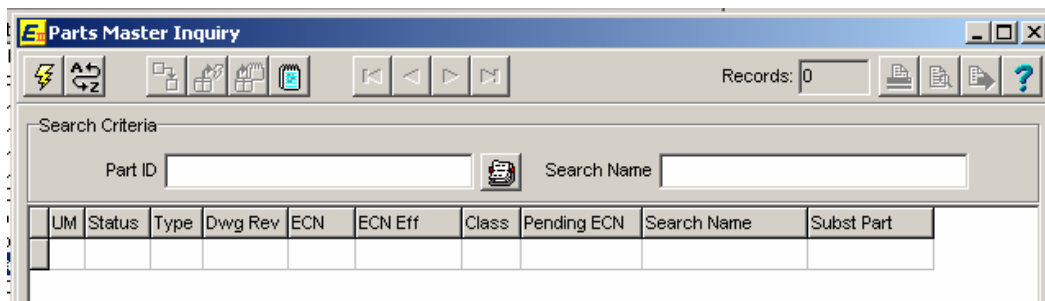
A program can have a maximum of six (6) selection criteria affiliated with it. If the inquiry you wish to modify has 6 prompts, you must delete one before adding another. If you add more than 6 you will get an error message.



Status is a hard coded search criteria and cannot be removed. If Status is one of the search criteria on the inquiry you wish to modify then you can have 5 search criteria in addition to the Status prompt, not 6.

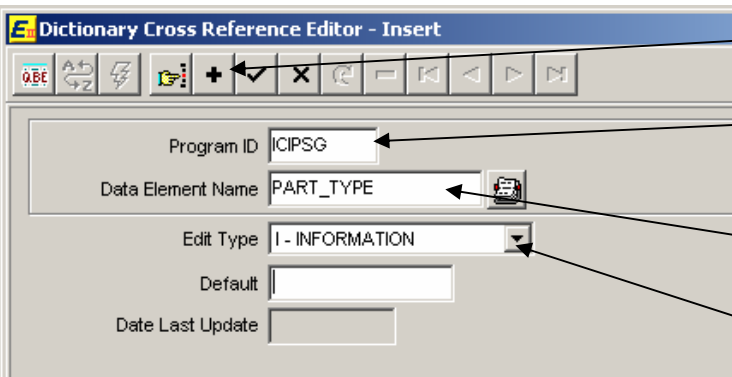
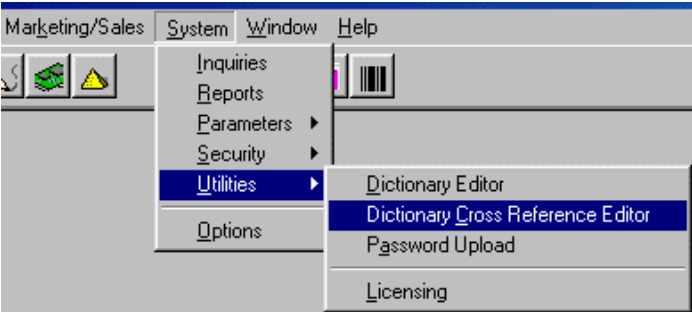
To add search criteria to the Inquiries use the following instructions.

In the Parts Master Inquiry the standard search criteria used for the Search Criteria are Part ID and Search Name. The following example will show how to add the Part Type field as additional search criteria to the search criteria.



How to Change Selection Criteria on an Inquiry Screen continued

Click Systems | Utilities | Dictionary Cross Reference Editor



Click the **New Record** Button

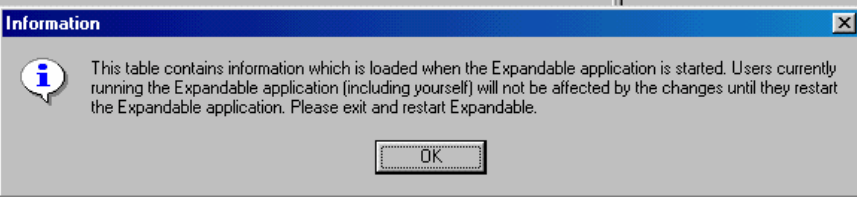
Enter the **Program Name** (Refer to the list on the following pages).

Enter the **Data Element Name** (Exactly with the underscores)

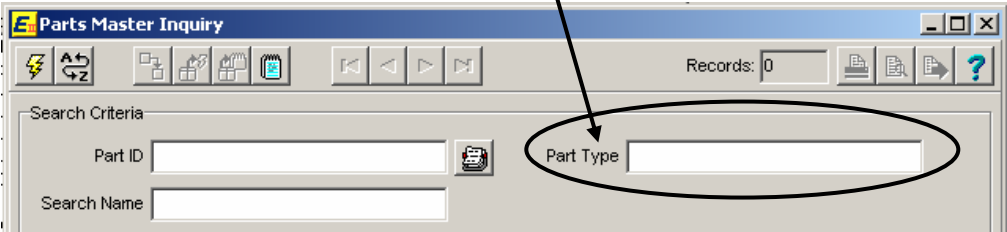
Edit Type is **I - Information**.

Save the change.

Exit Expandable and reenter Expandable.



The added selection is now one of the Search Criteria.



How to Change Selection Criteria on an Inquiry Screen continued

Inquiry Name	View used	Cross Reference Program	Tables Accessed
AP Check Batch	Vapicb	APICBG	APFCB, POFVM
AR Check Register	Vsoicr	SOICRG	ARFCR, SOFCM
AR Invoice Comments	Variic	ARIICG	ARFIC1
AR Invoice Payments	Vsoiip	SOIIPG	ARFCR, SOFCM
AR Invoice Transactions	Vsoiit	SOIITG	ARFIT, GLFCA, SOFCM
AR Invoices	Vsoiil	SOIILG	ARFID, ARFIM, SOFCM
Bill of Material Notes	Vpdicr	PDICRG	PDFBMN
Component Kit Status/Shortage	Vicikl	ICIKLG	JCFKL, JCFJM, ICFPM
Configuration Comments	Vccicc	CCICCG	CCFCC1
Configuration feature options	Vccico	CCICOG	CCFCO, ICFPM
Configuration model features	Vccicf	CCICFG	CCFCF, ICFPM
Configured products	Vccicp	CCICPG	CCFPM
Configured products detail	Vccipd	CCIPDG	CCFPD, ICFPM
Costed Inventory Transactions	Vicict	ICICTG	ICFIT, ICFPM, GLFCA
Costed PO Line Status	Vpoicl	POICLG	POFOD, POFOM
Costed SO Line Status	Vsoicl	SOICLG	SOFOD, SOFOM, SOFCM
Current vs New Standards	Vicicn	ICICNG	ICFPM, PDFNS
Customer Bookings	Vsoicb	SOICBG	SOFBH, SOFCM
Customer Checks	Vsoick	SOICKG	ARFCK, SOFCM
Customer Invoices	Vsoici	SOICIG	ARFIM, SOFCM
Customer Jobs	Vsoijs	SOIJSG	JCFJM, SOFCM
Customer Master Inquiry	Vsoigc	SOIGCG	SOFCM
Customer Orders	Vsoico	SOICOG	SOFOM, SOFCM
Customer Part Prices	Vicicq	ICICQG	SOFCP, SOFCM, ICFPM
Customer Parts by Customer	Vsoicp	SOICPG	SOFCP, SOFCM, ICFPM
Customer Parts by Part	Vicicp	ICICPG	SOFCP, SOFCM, ICFPM
Customer Serial Numbers	Vsoisn	SOISNG	SOFNS, SOFCM, ICFPM
ECN	Vecicn	ECICNG	ECFCN
ECN Parts Affected	Vecipa	ECIPAG	ECFEP, ECFCN, ICFPM
GL Account Master	Vglica	GLICAG	GLFCA
GL Account Transactions	Vgliat	GLIATG	GLFDT, GLFCA
GL Budgets	Vglibu	GLIBUG	GLFBU, GLFCA
GL Ledger Balances	Vgliilb	GLILBG	GLFLB, GLFCA
Inventory Stock Status	Viciss	ICISSG	ICFSS, ICFPM
Inventory Transactions	Viciit	ICIITG	ICFIT, ICFPM
Job Comments	Vjcijc	JCIJCG	JCFJC1
Job Cost History	Vjcihc	JCIHCG	JCFHD
Job Costs	Vjcidc	JCICDG	JCFCD, ICFPM
Job History	Vjcihm	JCIHMG	JCFHM
Job Journal Vouchers	Vjcijv	JCIJVG	JCFJV, GLFCA, JCFJM
Job Kit List/Shortage	Vjcikl	JCIKLG	JCFKL, JCFJM, ICFPM
Job Order Status	Vciijs	ICIJSG	JCFJM
Job Schedule	Vjcijs	JCIJSG	JCFJS, JCFJM
Job Transaction Notes	Vjcitn	JCITNG	JCFJN

How to Change Selection Criteria on an Inquiry Screen continued

Inquiry Name	View used	Cross Reference Program	Tables Accessed
Lot Orders	Vltilo	LTILOG	LTFLD, SOFCM, ICFPM
Lot Stock Status	Vltiss	LTISSG	LTFLS, LTFLM, ICFPM
Lot Transactions	Vltilt	LTILTG	LTFLD, ICFPM
Master Schedules	Vmsims	MSIMSG	MSFMS, ICFPM
MPS Available To Promise	Vmsiav	MSIAVG	MSFAV, ICFPM
MPS Plan Detail	Vmsipd	MSIPDG	MSFPD, ICFPM
MPS Sales Forecast	Vmsisf	MSISFG	MSFSF, ICFPM
MRP Part Plans	Vmmipp	MMIPPG	MMFPP, ICFPM
MRP Pegging	Vmmipg	MMIPGG	MMFPG, ICFPM, JCFJM
MRP Requirements Planning	Vmmirp	MMIRPG	MMFMR, ICFPM, POFVM
Multiple Location Stock Status	Viciml	ICIMLG	MLFML, ICFPM
Operation Tooling	Vsriot	SRIOTG	SRFOT, ICFPM, SRFTM
Part Lots	Vltipl	LTIPLG	LTFLM, ICFPM
Part Routings	Vsripr	SRIPRG	SRFRC, SRFRM, ICFPM, POFVM
Part Serial Numbers	Vicisn	ICISNG	SOFNS, ICFPM, SOFCM
Parts Master Inquiry	Vicips	ICIPSG	ICFPM
Procedure Descriptions	Vsripd	SRIPDG	SRFPD1
Product Pricing	Vsoipl	SOIPLG	SOFPL, ICFPM
Purchase History by Part	Viciph	ICIPHG	POFPH, POFVM
Purchase History by Vendor	Vpoiph	POIPHG	POFPH, POFVM
Purchase Order Comments	Vpoioc	POIOCG	POFOC1
Purchase Order GL Transactions	Vpoigl	POIGLG	POFGL, GLFCA, ICFPM
Purchase Order Line Receipts	Vpoirt	POIRTG	POFRT, ICFPM
Purchase Order Line Status	Vicipo	ICIPOG	POFOD, POFOM, POFVM
Purchase Order Receipt Notes	Vpoirn	POIRNG	POFRN
Purchase Orders	Vpoipl	POIPLG	POFOD, POFOM, POFVM
Sales History by Customer	Vsoish	SOISHG	SOFSH, SOFCM, ICFPM
Sales History by Part	Vicish	ICISHG	SOFSH, ICFPM, SOFCM
Sales Order Comments	Vsoioc	SOIOCG	SOFOC1
Sales Order Line Status	Viciso	ICISOG	SOFOD, SOFOM, SOFCM
Sales Orders	Vsoisl	SOISLG	SOFOD, SOFOM, SOFCM
Serialized Inventory	Vicisi	ICISIG	SOFNS, ICFPM, ICFSM
Serial Number Cross References	Vjcisx	JCISXG	JCFSX, ICFPM
Serial Number Detail Transitions	Vsoisd	SOISDG	SOFSD, ICFPM
Serial Number Orders	Vsoiso	SOISOG	SOFSD, ICFPM
Serial Number Where Used	Vjcisu	JCISUG	JCFSX, ICFPM
Shipment Transactions	Vsoist	SOISTG	SOFST, SOFOM, ICFPM, SOFCM
Single Level Bills Of Material	Vicibm	ICIBMG	PDFBM, ICFPM
Single Level Where Used	Viciwu	ICIWUG	PDFBM, ICFPM
Stores Master Inquiry	Vicism	ICISMG	ICFSM
Time Charges	Vlditc	LDITCG	LDFTC, LDFEM, GLFCA
Tooling Parts	Vsritm	SRITMG	SRFTM

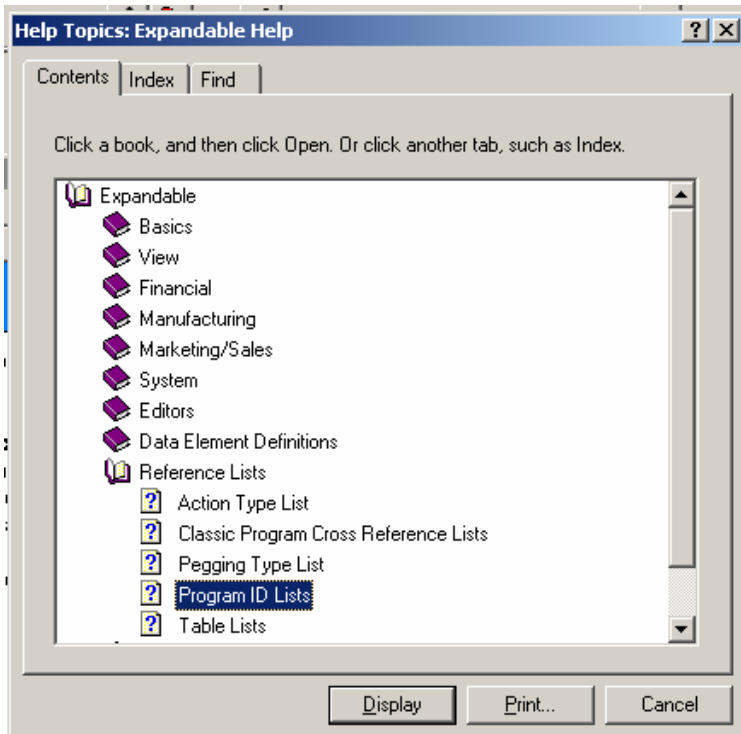
How to Change Selection Criteria on an Inquiry Screen continued

Inquiry Name	View used	Cross Reference Program	Tables Accessed
Vendor Check Register	Vpoicr	POICRG	APFCR, POFVM
Vendor Checks	Vpoick	POICKG	APFCK, POFVM
Vendor Invoices	Vpoiwi	POIWI	APFVO, POFVM
Vendor Master Inquiry	Vpoiwi	POIWI	POFVM
Vendor Orders	Vpoiwo	POIWO	POFOM, POFVM
Vendor Parts by Part	Vpovp	POVPG	POFVP, ICFPM, POFVM
Vendor Parts by Vendor	Vpovv	POVVG	POFVP, POFVM, ICFPM
Vendor Price by Part	Vpovq	POVQG	POFVP, ICFPM, POFVM
Voucher Transactions	Vpovt	POVTD	APFVT, GLFCA, POFVM
WIP Balances	Vjciwb	JCIWBG	JCFJM, SOFCM
Work Center Schedule	Vjciws	JCIWSG	JCFJS, JCFJM, SRFWC
Work Centers	Vjciwc	JCIWCG	SRFWC

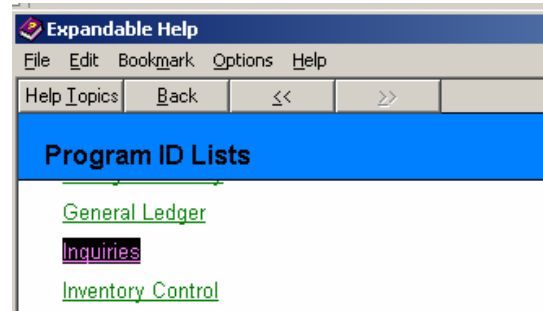
How to Change Selection Criteria on an Inquiry Screen continued

Follow these steps to see what data elements are currently available in a particular script

1. Use the Expandable help to find the program name of the Inquiry. **Help | Expandable | Reference List | Program ID List.**

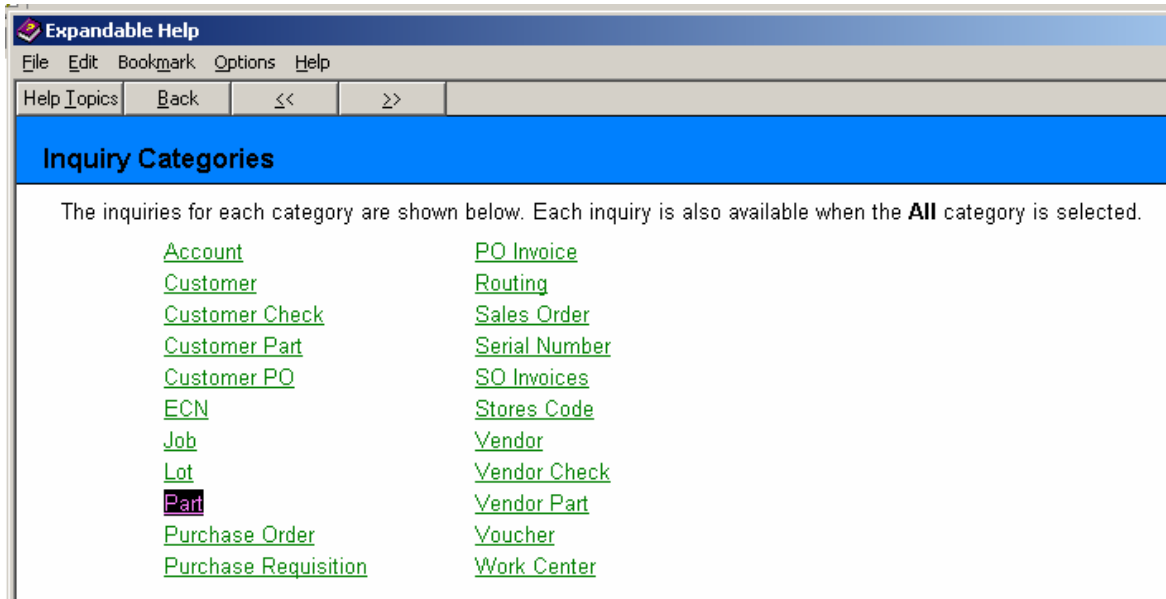


2. Select Inquiries

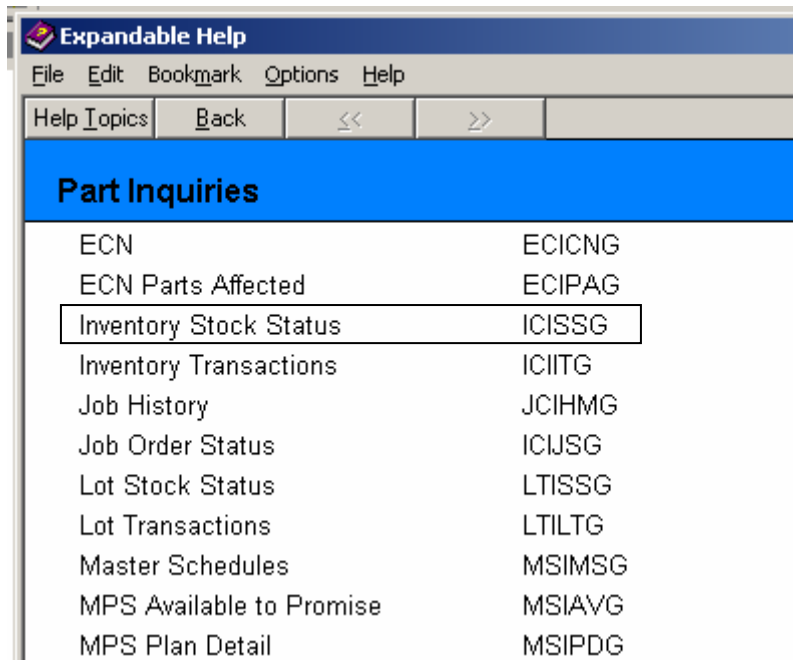


How to Change Selection Criteria on an Inquiry Screen continued

3. Select a subject or select all. In this example **Part** is selected.

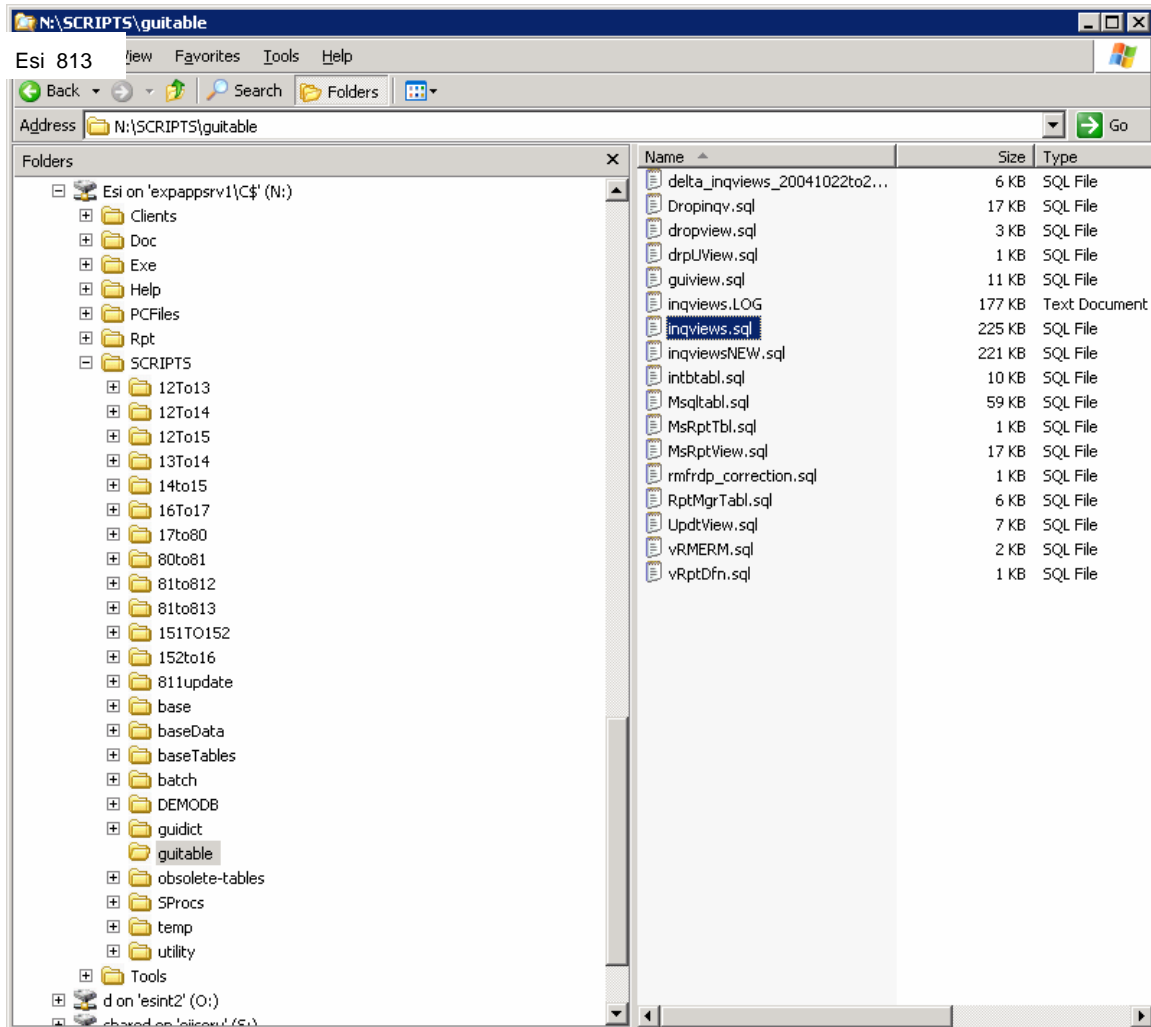


4. Double-click the selected topic. All Inquiries pertaining to the subject will display. Notice the Inventory Stock Status Program ID is ICISSG.

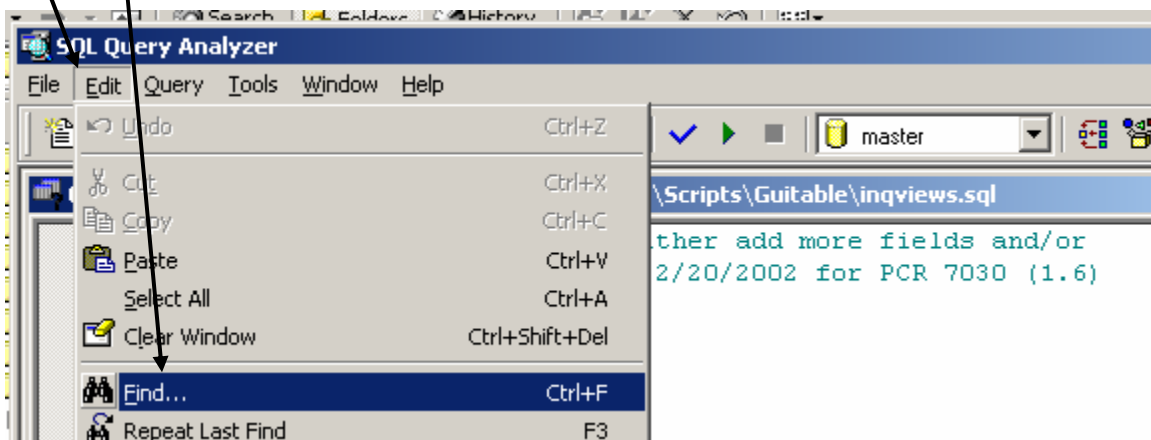


How to Change Selection Criteria on an Inquiry Screen continued

5. Go to **Windows Explorer** and find your **ESI Folder**.
Drill down via **Esi | Scripts | Guitable | inqviews.sql**

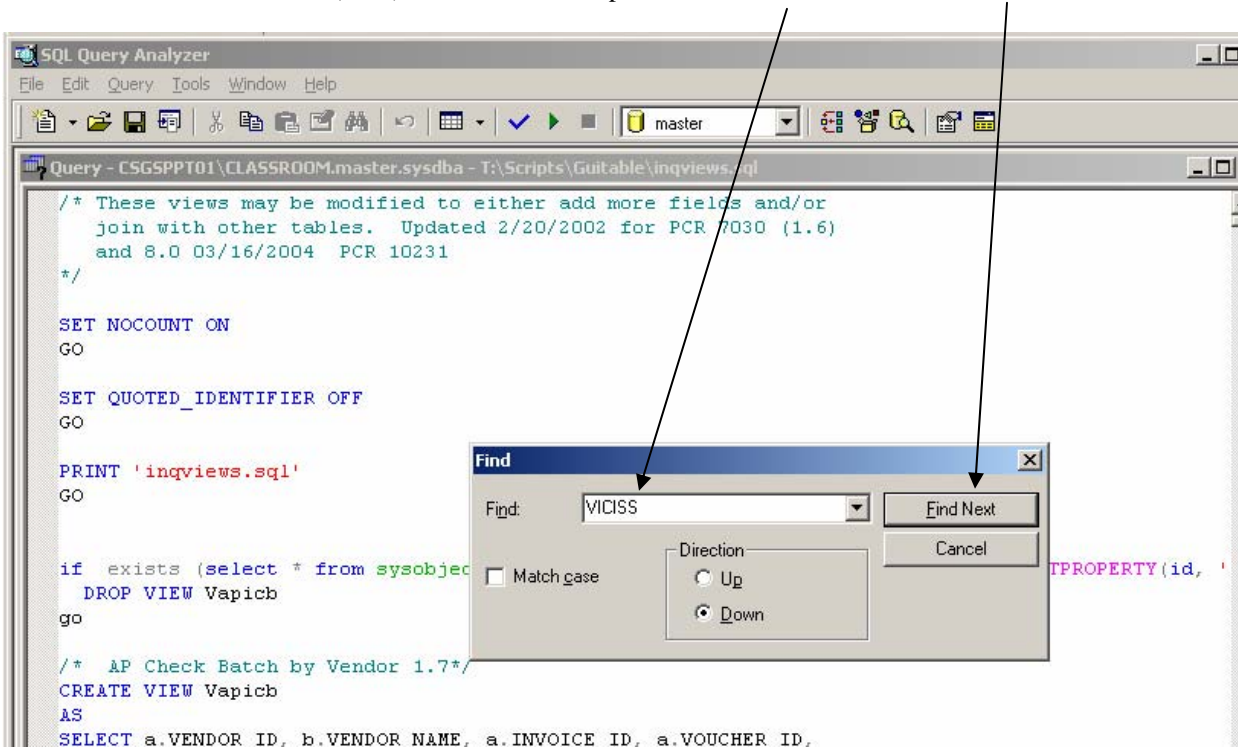


6. Click **Edit | Find**



How to Change Selection Criteria on an Inquiry Screen continued

- 7. Enter the Inquiry name. To get the name of the program to find in the SQL script. Drop the ending G of the program name and add the letter V (view) in front. For example ICISSG will become VICISS. Click Find Next.



How to Change Selection Criteria on an Inquiry Screen continued

The script will list all of the Data Elements currently available to the Inquiry screen.

```

/* Inventory Stock Status */

if exists (select * from sysobjects where id = object_id('dbo.Viciss') and OBJECTPROPERTY(id, '
DROP VIEW Viciss

go
CREATE VIEW Viciss
AS
SELECT a.STORES_CODE, a.PART_ID, a.STOCK_LOCATION,
a.MULTI_LOC, a.SAFETY_STOCK, a.MO_BEG_QTY,
a.ON_HAND_QTY, a.RECEIPTS_MTD, a.ISSUES_MTD,
a.ADJUSTMTS_MTD, a.DATE_LAST_ACT, a.YEAR_BEG_QTY,
a.RECEIPTS_YTD, a.ISSUES_YTD, a.ADJUSTMTS_YTD,
a.BOOK_QTY, a.PHYSICAL_QTY, a.DATE_LAST_PHY,
a.DATE_LAST_PRINT, a.DATE_LAST_ISSUE,
a.DATE_LAST_RECPT, a.COUNT_DAYS, b.PART_DESC,
a.PREV_YR_ISSUES, b.PART_TYPE, b.PART_UM,
a.CREATED_BY,
b.SEARCH_NAME, b.DWG_REV, b.DWG_SIZE, b.ECN,
b.ECN_EFF_DATE, b.PENDING_ECN, b.PLANNER_ID,
b.BUYER_ID, b.PREF_VENDOR, b.AUTO_PO_CREATE,
b.ABC_CODE, b.COMM_CODE, b.ICFPM_USER_1,
b.ICFPM_USER_2, b.ICFPM_USER_3, b.ICFPM_USER_4,

```

- Scroll down to the bottom of the VICISS Script to see the tables that are included in this script. Notice in this example the Stock Status (ICFSS) is the (a) table and the Parts Master is the (b) table. The letter preceding the data element designates from which table the data element is derived

```

b.STD_WORK_3, b.STD_3_HRS, b.STD_LAB_HRS_ADD,
b.STD_LAB_HRS_CUM, b.STD_LAB_CST_ADD,
b.STD_LAB_CST_CUM, b.STD_MTL_CST_ADD,
b.STD_MTL_CST_CUM, b.STD_OUT_CST_ADD,
b.STD_OUT_CST_CUM, b.STD_OTH_CST_ADD,
b.STD_OTH_CST_CUM, b.STD_OHD_CST_ADD,
b.STD_OHD_CST_CUM, b.STD_UNIT_COST, b.BASE_CURR,
b.BC_RATE, b.BC_STD_COST, b.QTY_PER_CARTON,
b.UPC_CODE, b.ITF_CODE, b.FRT_CLASS, b.WARRANTY_DAYS,
b.SALES_MARKET, b.ORIG_COUNTRY, b.DATE_INACTIVE,
b.PART_HOLD_CODE, b.SLX_PART, b.ICFPM_USER_9,
b.ICFPM_USER_10, b.ICFPM_USER_11, b.ICFPM_USER_12,
b.ICFPM_USER_13, b.ICFPM_USER_14, b.ICFPM_USER_15,
b.ICFPM_USER_16, b.OPERATOR_ID

FROM ICFSS a WITH (NOLOCK) INNER JOIN
ICFPM b WITH (NOLOCK) ON a.PART_ID = b.PART_ID

```

How to Change Selection Criteria on an Inquiry Screen continued

To get a complete list of all data elements contained in any table, refer to the Tables Layouts document available on Expandable's web site. Any data elements that exist in a table but do not display on this script may be added to the script. Once a Data Element is added to the script, you can then add the Data Element to the Selection Criteria or to the grid display on the ICISSG screen.

Note: You must Save your modification. Any new releases may override your modifications. Use your Saved SQL script to edit the new one replaced by the upgrade.