



Installation Guide for SQL Server 2005

Install SQL Server 2005 on Windows Server 2003

Tech Note #138—Install SQL Server 2005

The purpose of this document is to set forth a guide to installing SQL Server 2005 only. This document should be used as a guide only and not as an instruction manual. Your installation process may include more or less prompts than those shown here. For complete instructions, see Microsoft's web page <http://msdn2.microsoft.com/en-us/library/ms143219.aspx> (search: install SQL Server 2005).

Expandable Software, Inc.
1171 Homestead Road
Santa Clara, CA 95050-5478

Customer Support:
(408) 247-3300 phone
support@expandable.com

Sales and Administration:
(408) 261-7880 phone
(408) 247-2160 fax

Contact Hours:
8:00 a.m. to 5:00 p.m.
Monday through Friday (except holidays)

Table of Contents

<u>INSTALLATION GUIDE FOR SQL SERVER 2005</u>	1
<u>QUESTIONS AND ANSWERS</u>	1
Q: How long does the installation take?	1
Q: Is SQL Server 2005 compatible with my version of Expandable?	1
Q: What location(s) should I choose for SQL Server installation?	1
<u>STEP 1: INSERT THE SQL SERVER CD TO BEGIN THE INSTALLATION</u>	2
<u>STEP 2: CONFIGURE SQL SERVER SERVICES</u>	12

READ THESE PAGES FIRST

Installation Guide for SQL Server 2005 Questions and Answers

Q: How long does the installation take?

A: Between one half and one full hour. There are numerous prompts requiring input from the user.

Q: Is SQL Server 2005 compatible with my version of Expandable?

A: See the SQL Server Compatibility Table below.

Q: What location should I choose for SQL Server Data Files installation?

A: If your server uses a root drive along with a large “data drive,” set the Data Files destination to your “data drive” and the program files destination to your root drive. Otherwise, you may accept the defaults. See item 9 below.

SQL Server Compatibility Table

Expandable Server Version	SQL Server 2005	SQL Server 2000	SQL Server 7
8.1.2	<i>not certified</i> [*]	Yes	No
8.1.1 CP20050819A and above	<i>not certified</i>	Yes	No
8.1.1 CP20050712A and below	<i>not certified</i>	Yes	Yes

^{*} Expandable 8.1.3 is the only Expandable version being tested with SQL Server 2005.

Step 1: Insert the SQL Server CD to begin the installation

1. Under the **Install** menu, click **“Server components, tools, Books Online, and samples.”**



Fig. 1: The SQL Server 2005 main menu.

2. Accept the End User License Agreement and click **Next**.

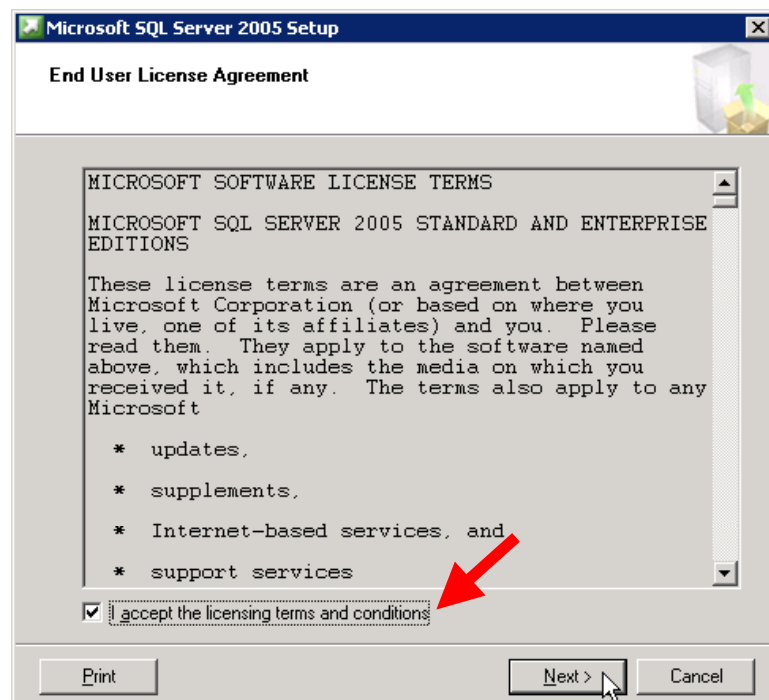


Fig. 2: Accepting the End User License Agreement.

3. Click Install to install the SQL Server 2005 prerequisites.

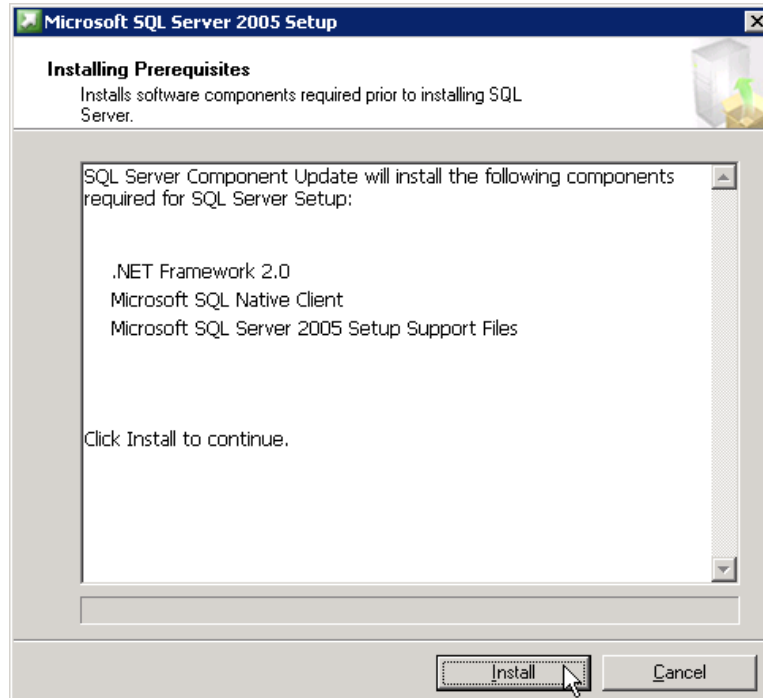


Fig. 3: Accepting the prerequisites installation, a requirement.

4. Click **Next** when the prerequisites installation is complete.

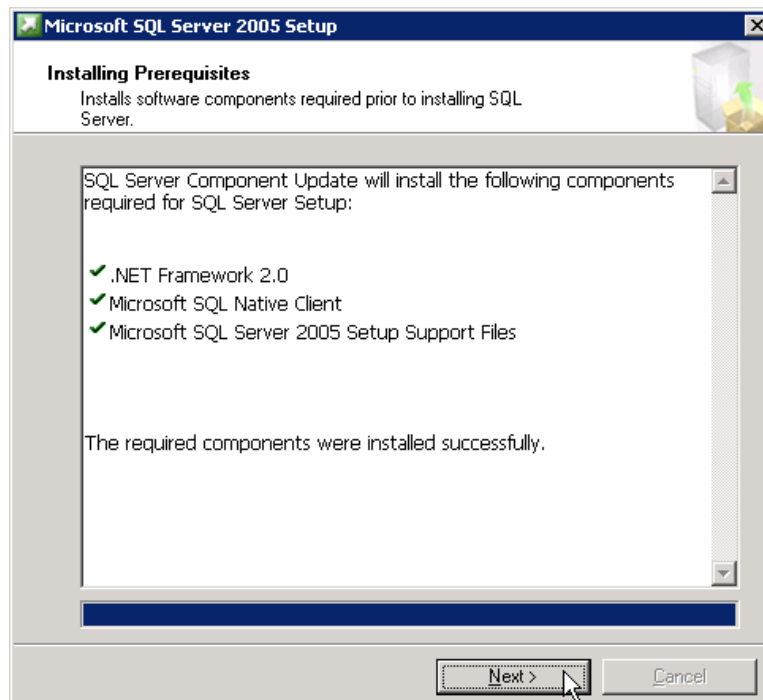


Fig. 4: Prerequisite installations complete.

5. Click **Next** at the **SQL Server Installation Wizard**.



Fig. 5: The SQL Server installation wizard.

6. If there are no failures in the Status column, click **Next** when the **System Configuration Check** is complete.

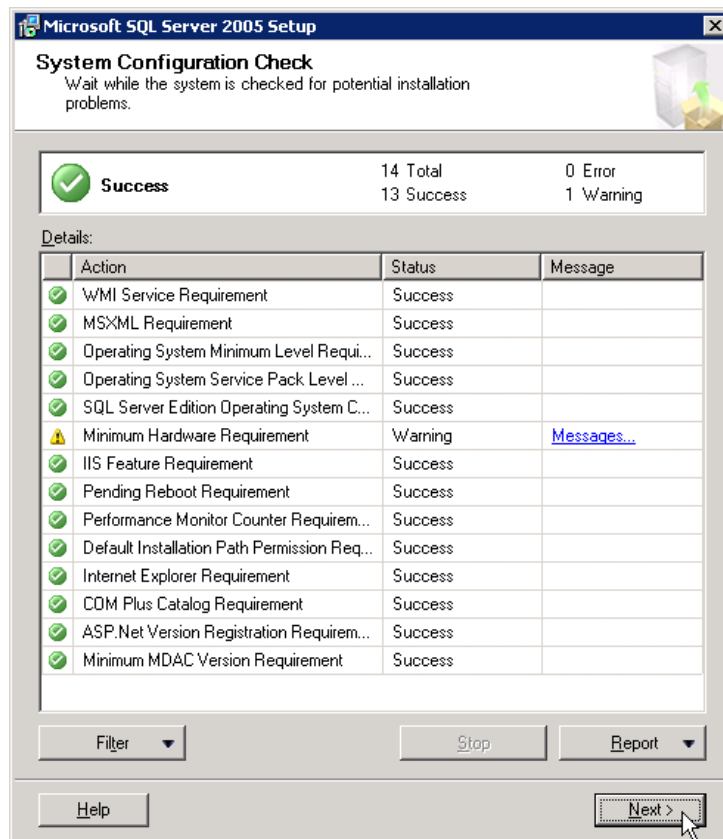
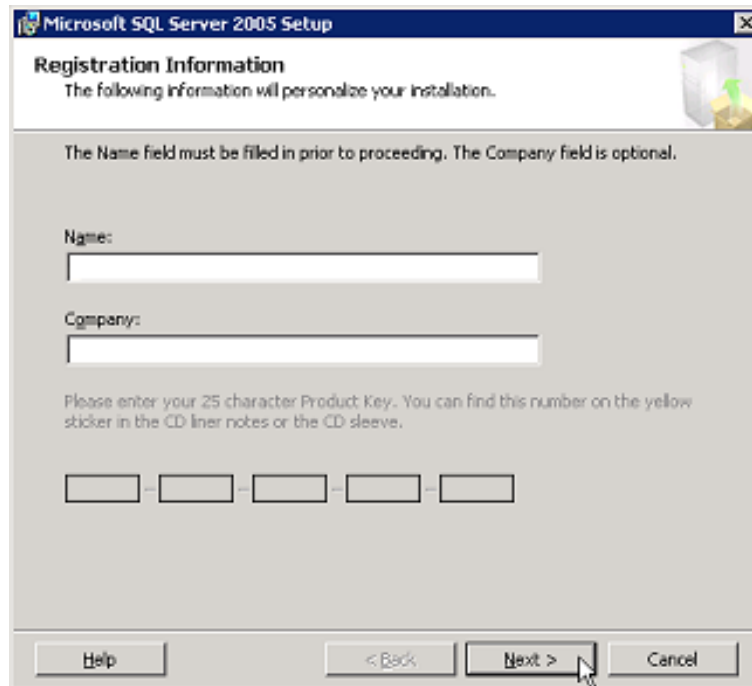


Fig. 6: The System Configuration Check.

The “IIS Feature Requirement” is a requirement only for SQL Server Reporting Services. If you are not installing Reporting Services, IIS is not required and you may ignore the IIS warning. Any other warnings or failures should be reviewed before continuing.

7. At the **Registration Information window**, provide your **user and company name** as well as the **Product Key** and click **Next**.



The screenshot shows the "Microsoft SQL Server 2005 Setup" window with the "Registration Information" tab selected. The window title bar includes the Microsoft logo and the text "Microsoft SQL Server 2005 Setup". The main content area has a header "Registration Information" and a sub-header "The following information will personalize your installation." Below this, a note states: "The Name field must be filled in prior to proceeding. The Company field is optional." There are two text input fields: "Name:" and "Company:". Below these fields, a note says: "Please enter your 25 character Product Key. You can find this number on the yellow sticker in the CD liner notes or the CD sleeve." Underneath this note is a product key input field consisting of five small boxes separated by hyphens. At the bottom of the window, there are four buttons: "Help", "< Back", "Next >", and "Cancel". A mouse cursor is pointing at the "Next >" button.

Fig. 7: Complete the Product Registration Information prompts and click Next.

8. Choose the proper components to install and click **Advanced**.

NOTE: Integration Services is required for scheduling database maintenance plans.

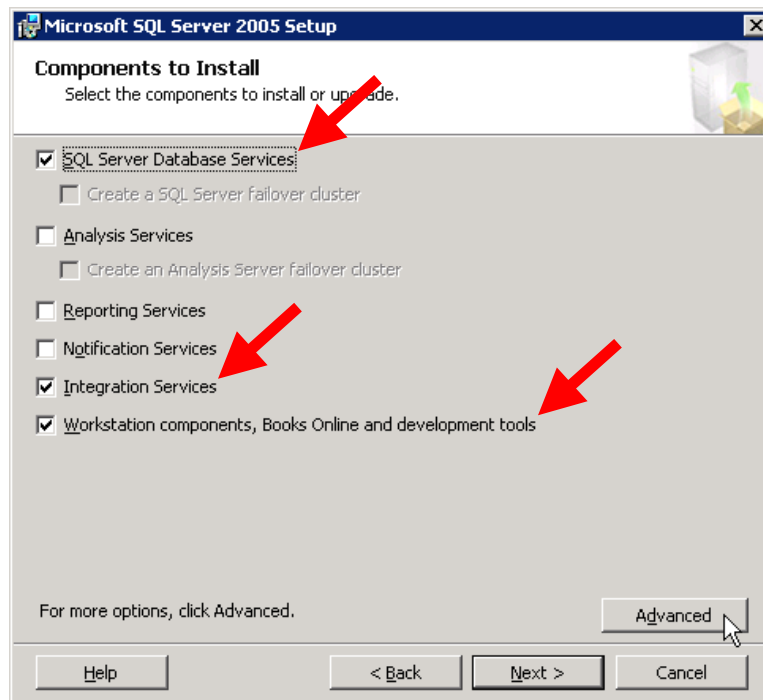


Fig. 8: Choosing the components to install.

9. To change the default location for the data files, choose **Data Files** under **Database Services** and click **Browse**.

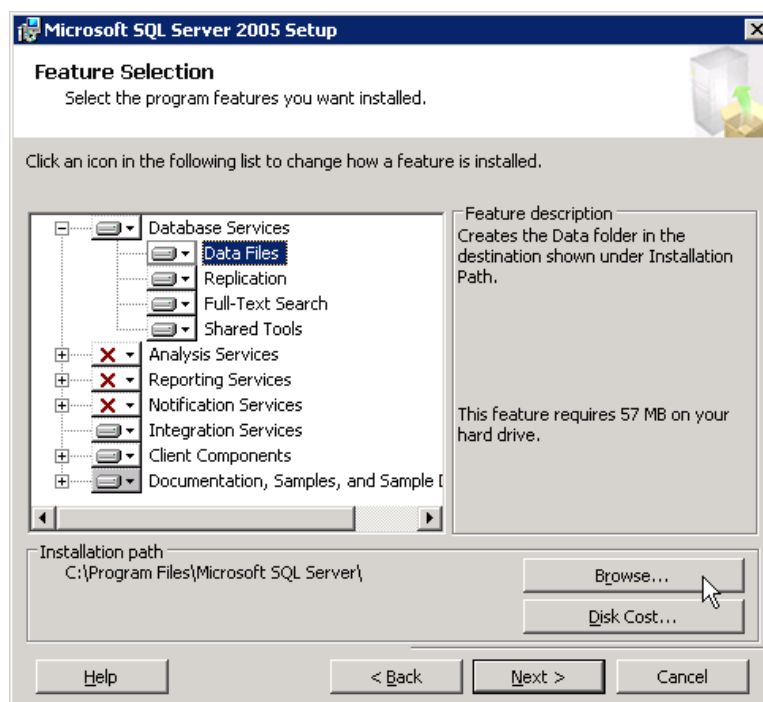


Fig. 9: Changing the default location of the Data Files installation.

10. Browse to or enter the new location and click **OK**.

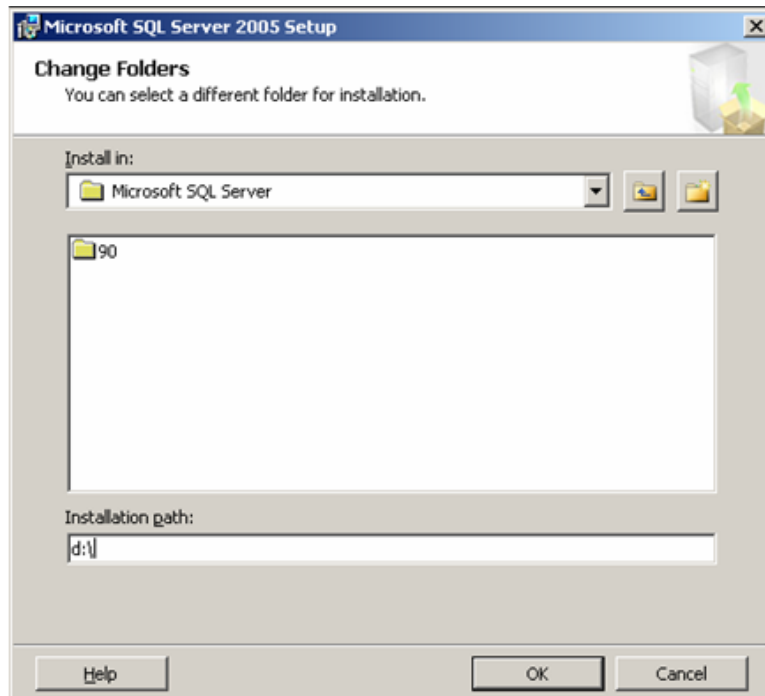


Fig. 10: Specifying the data files to be saved into the d:\data folder.

11. If you want SQL Server Books Online but not Sample Databases or Sample Code and Applications, click **Next**. Otherwise, left-click “*Documentation, Samples, and Sample Databases*” and choose “*Entire feature will be installed on local hard drive*” and click **Next**.

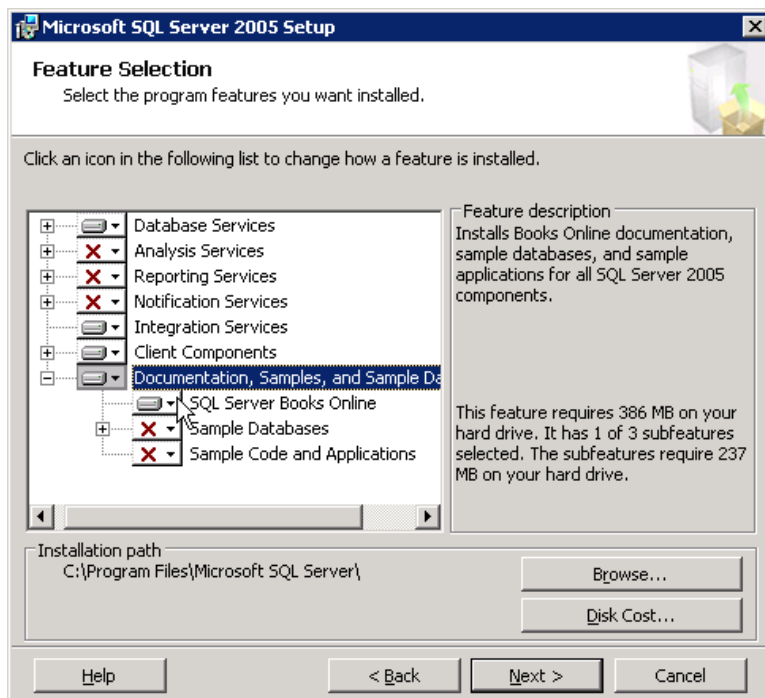


Fig. 11: Decide if you want Sample Databases and Sample Code and Applications.

- For a default named instance, choose *Default Instance* and click **Next**. To create another instance of SQL Server, choose *Named Instance*, provide a name, and click **Next**.

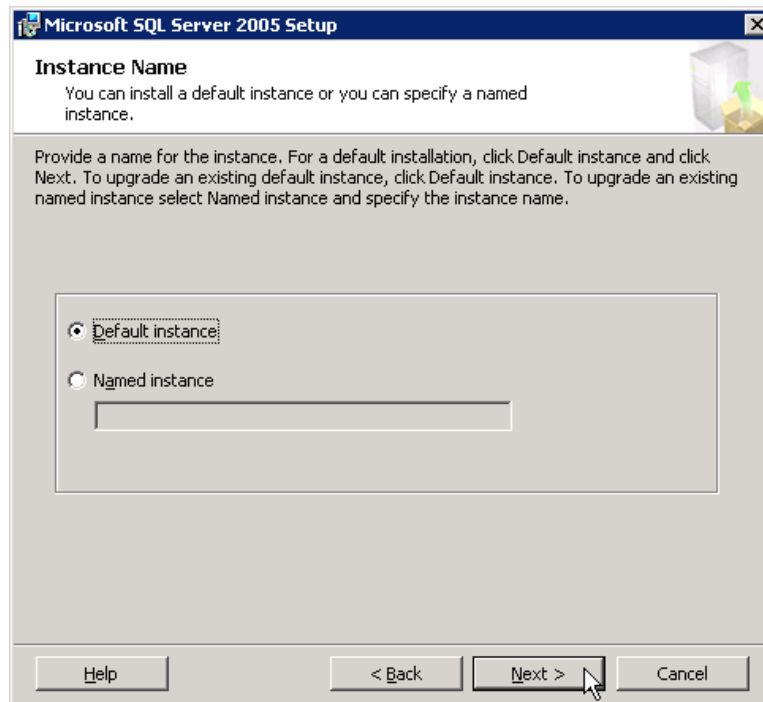


Fig. 12: Using the default server name for the SQL Server 2005 instance.

- At the **Service Account** window, set the configuration as shown in Fig. 13: below and click **Next**.

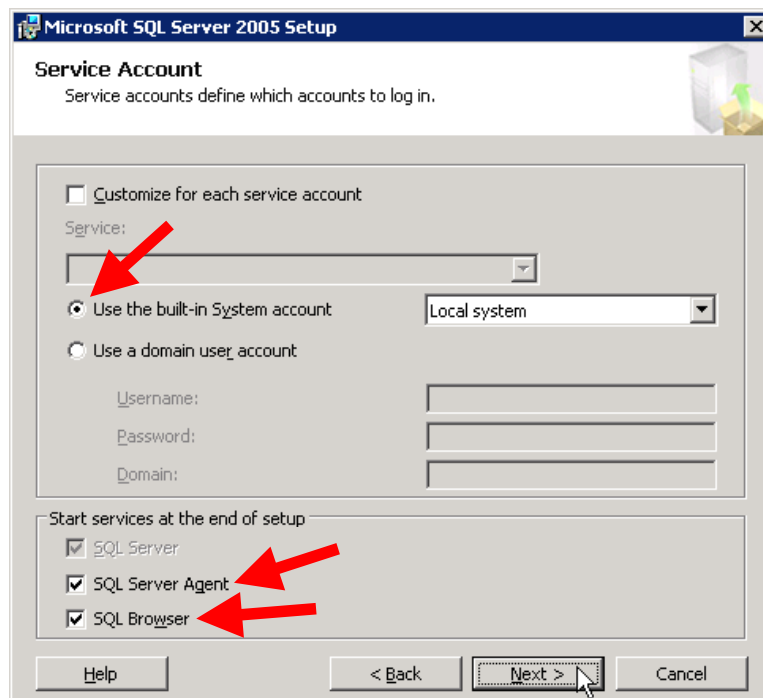


Fig. 13: The Service Account settings.

- At the **Authentication Mode** window, choose **Mixed Mode**, specify a password for the SQL Server 2005 “sa” login, and click **Next**.

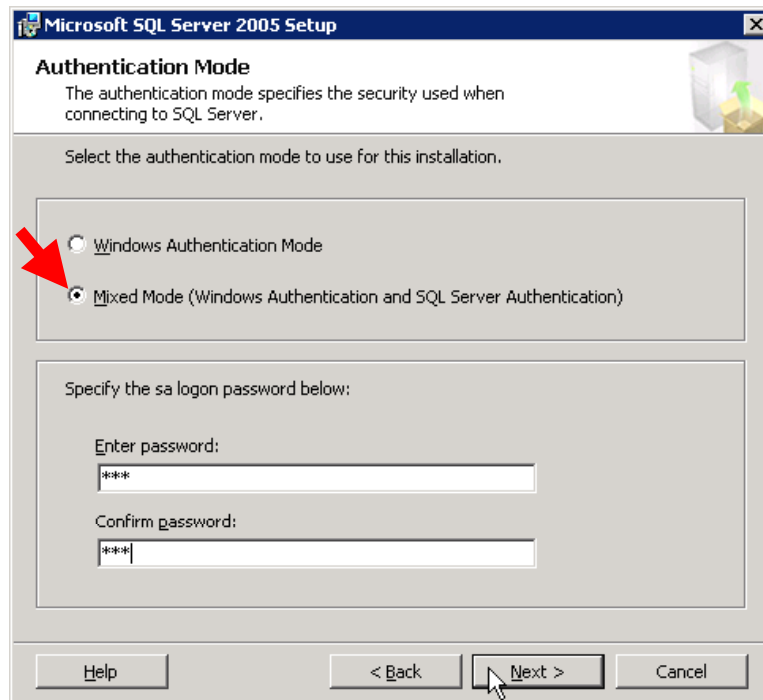


Fig. 14: Choosing Mixed Mode for SQL Server authentication.

- At the **Collation Settings** window, accept the default by clicking **Next**.

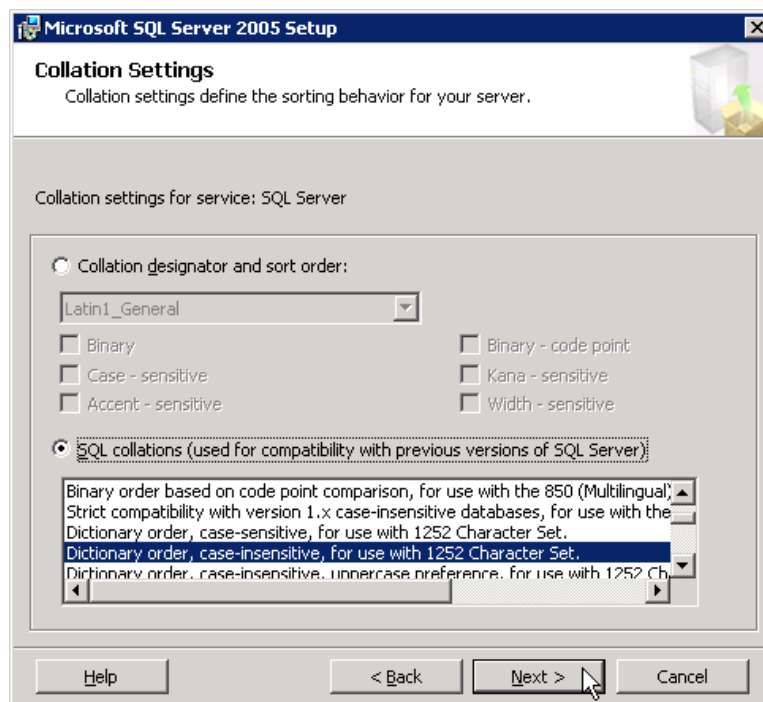


Fig. 15: Accepting the default collation sort order.

16. At the **Error and Usage Report Settings** window, click **Next**.

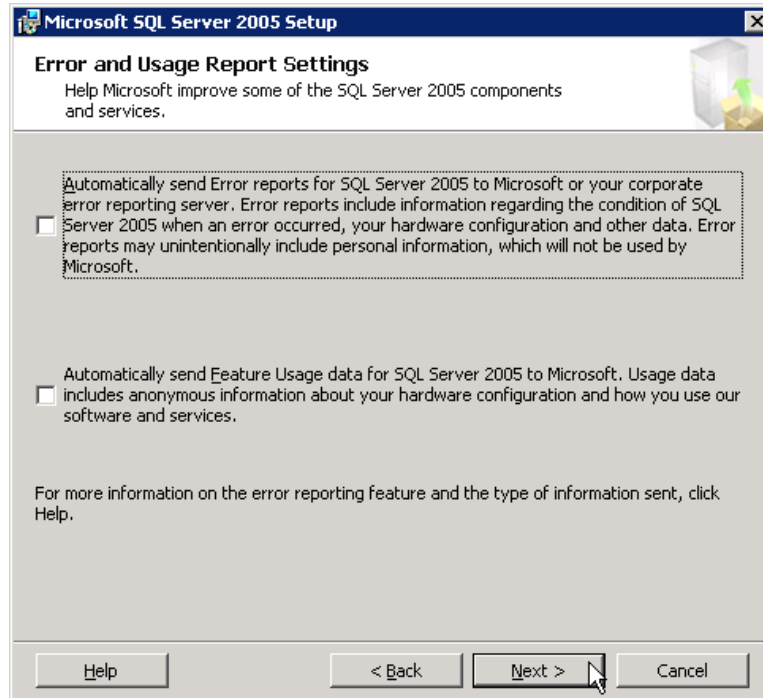


Fig. 16: Accepting the Error and Usage Report Settings default.

17. At the **Ready to Install** window, click **Install**.

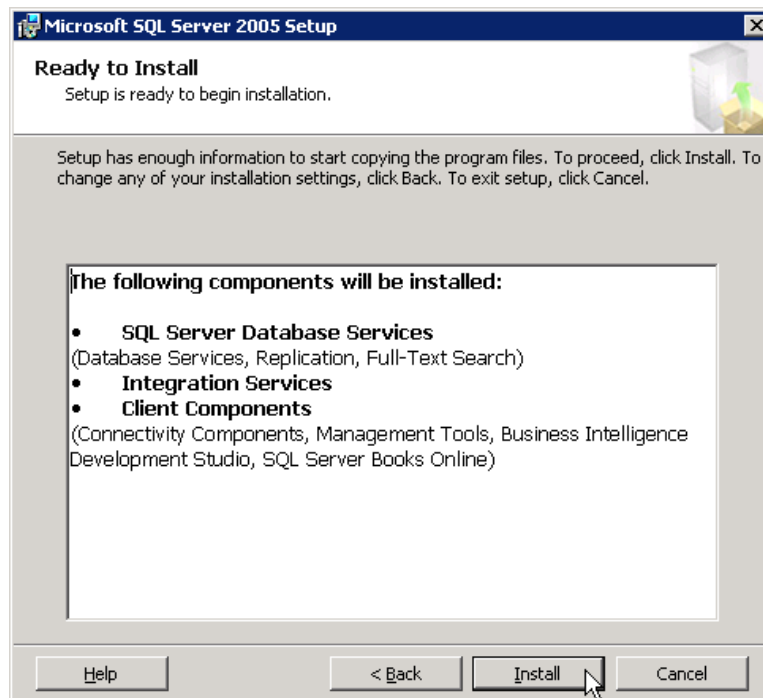


Fig. 17: Click Install to begin the installation.

18. When the installation is complete, click **Next**.

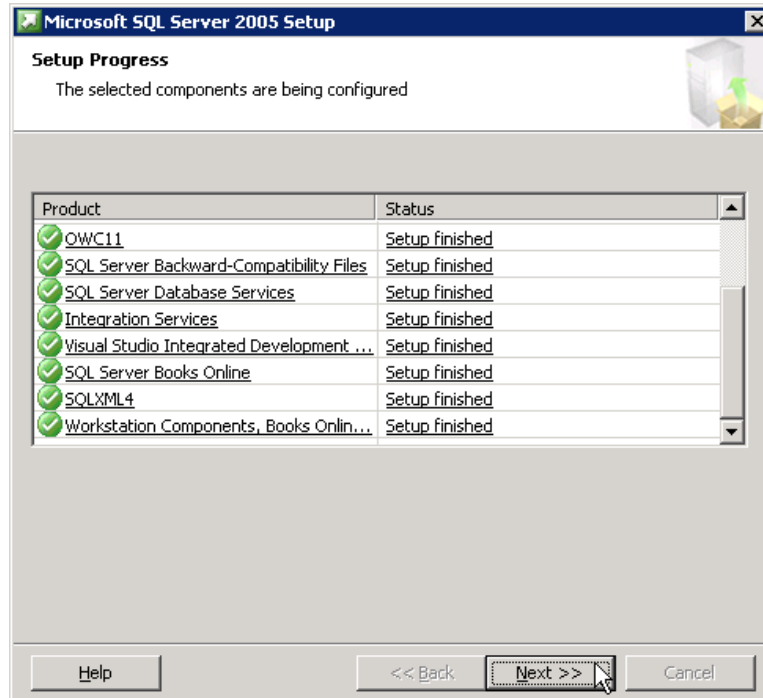


Fig. 18: Individual components setup completed.

19. Click **Finish** at the **Completing Microsoft SQL Server 2005 Setup** window.

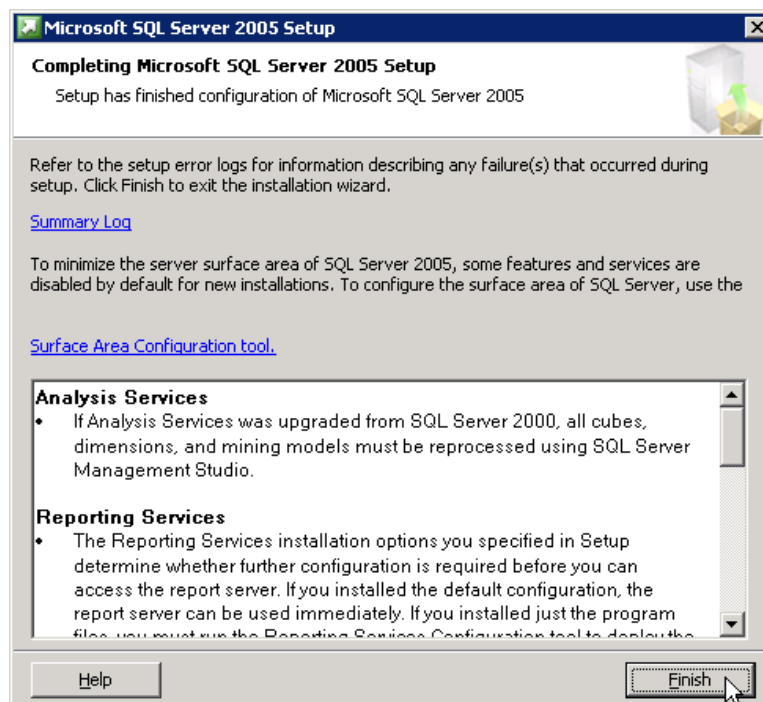


Fig. 19: SQL Server 2005 installation is complete.

Step 2: Configure SQL Server services

20. From **Start | Programs**, choose **Microsoft SQL Server 2005 | SQL Server Configuration Manager**.
21. Under **SQL Server 2005 Network Configuration**, choose **Protocols for MSSQLSERVER**. Enable the **TCP/IP** protocol and disable the **VIA** protocol.

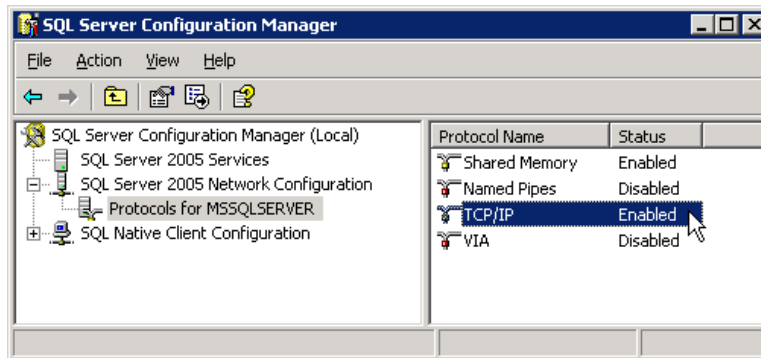


Fig. 20: Setting SQL Server protocol configuration.

THE INSTALLATION IS NOW COMPLETE