



## **Restore a Database in SQL Server 2005**

*The purpose of this document is to provide a general outline of steps encountered when restoring a database on a SQL Server 2005 database server.*

*Tech Note #134—Restore a Database in SQL 2005*

**Expandable Software, Inc.  
1171 Homestead Road  
Santa Clara, CA 95050-5478  
Customer Support: 408-247-3300**

# READ THESE PAGES FIRST

## Restore a Database in SQL Server 2005

SQL Server Compatibility Table

Expandable Server Version	SQL Server Version	Expandable Client Version	Crystal Reports Version
8.1.2 and above	2000, 2005	8.1.2	10
8.0 to 8.1.1	7 <sup>*</sup> , 2000	8.0	8.5

### Step 1: Restore the database from backup file

1. In the SQL Server Management Studio's Object Explorer, right-click **Databases** and choose "**Restore Database...**".

You will need to be logged into Management Studio as "sa" or some other account that has permission to create databases on the server.

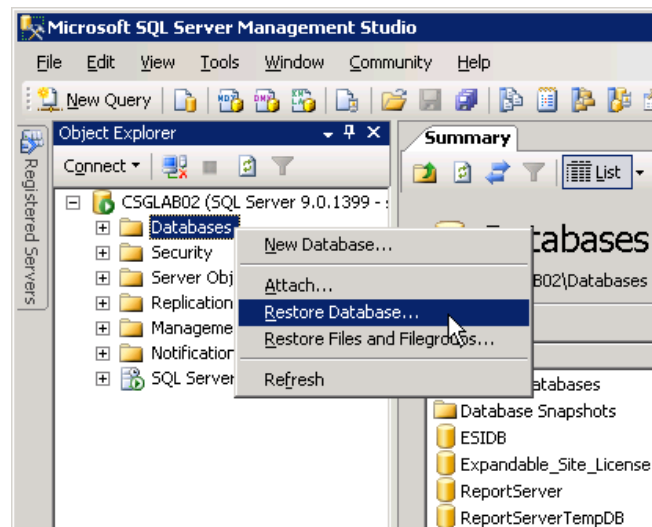


Fig. 1: Beginning the Restore Database function.

2. At the Restore Database window, fill in the "To database:" textbox with your new database name.
3. Click the **From Device** option to specify the source backup file.

\* SQL Server 7 is no longer supported and will not work with Expandable beginning with Expandable 8.1.2 CP20050417A.

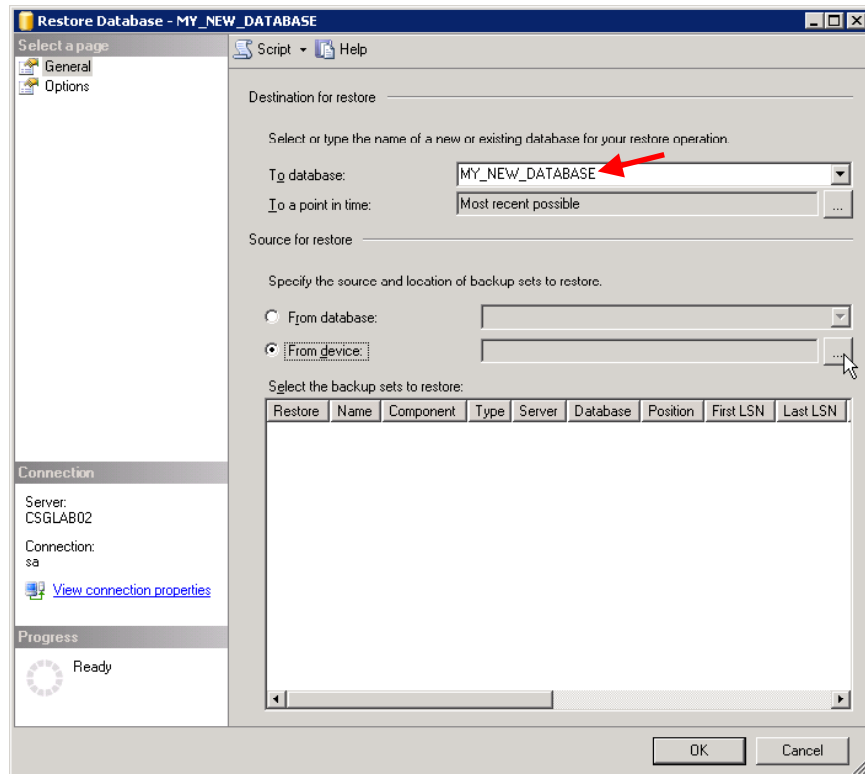


Fig. 2: Specifying a new database name.

- At the **Backup File** window, click the **Add** button.

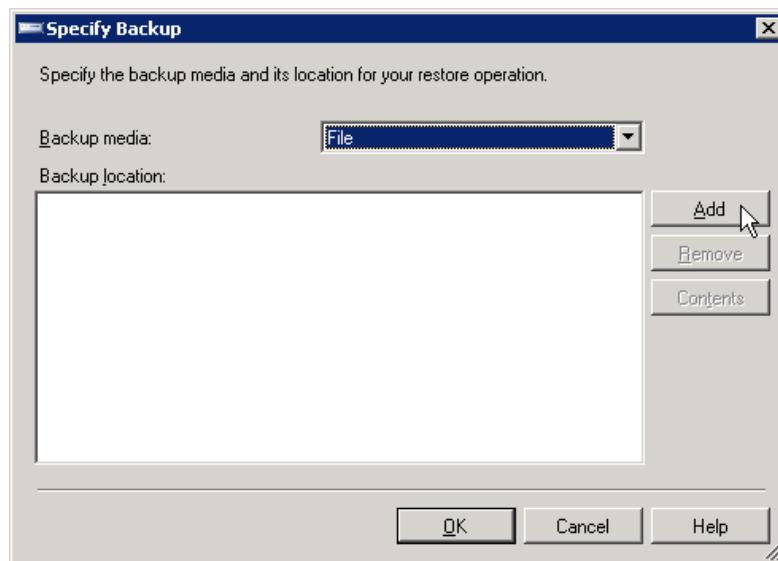


Fig. 3: Click Add to browse for a database backup file.

- At the **Locate Backup File** window, click **OK** after choosing a valid backup file.

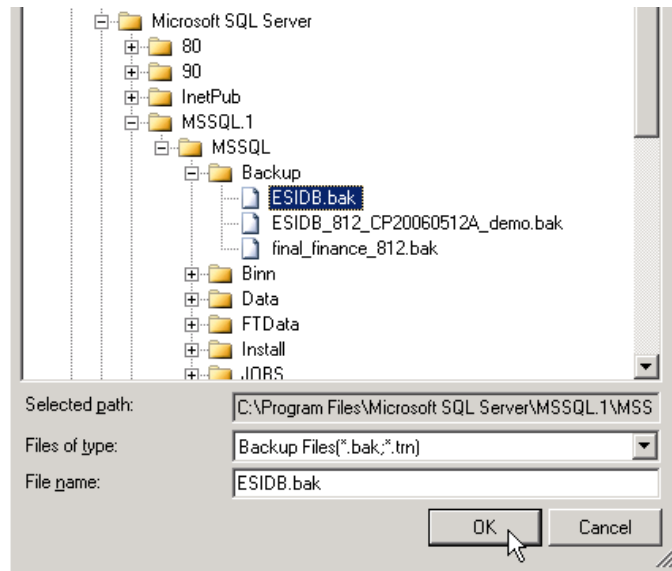


Fig. 4: Locating the backup file to be restored.

6. Back at the **Specify Backup** window, choose **OK**.

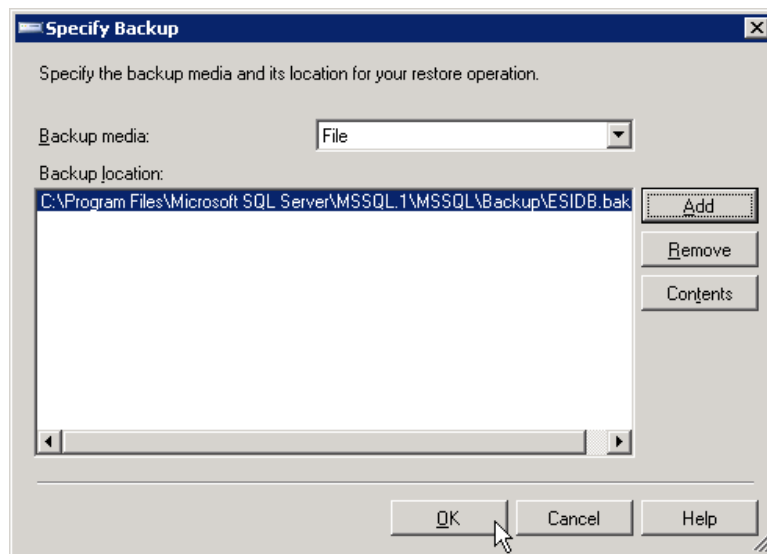
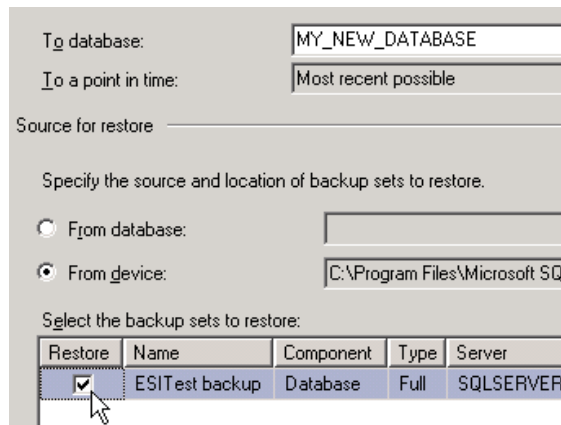


Fig. 5: Click OK now that a backup file has been specified.

7. Back at the **Restore Database** window, click the checkbox next to the backup file to be restored.



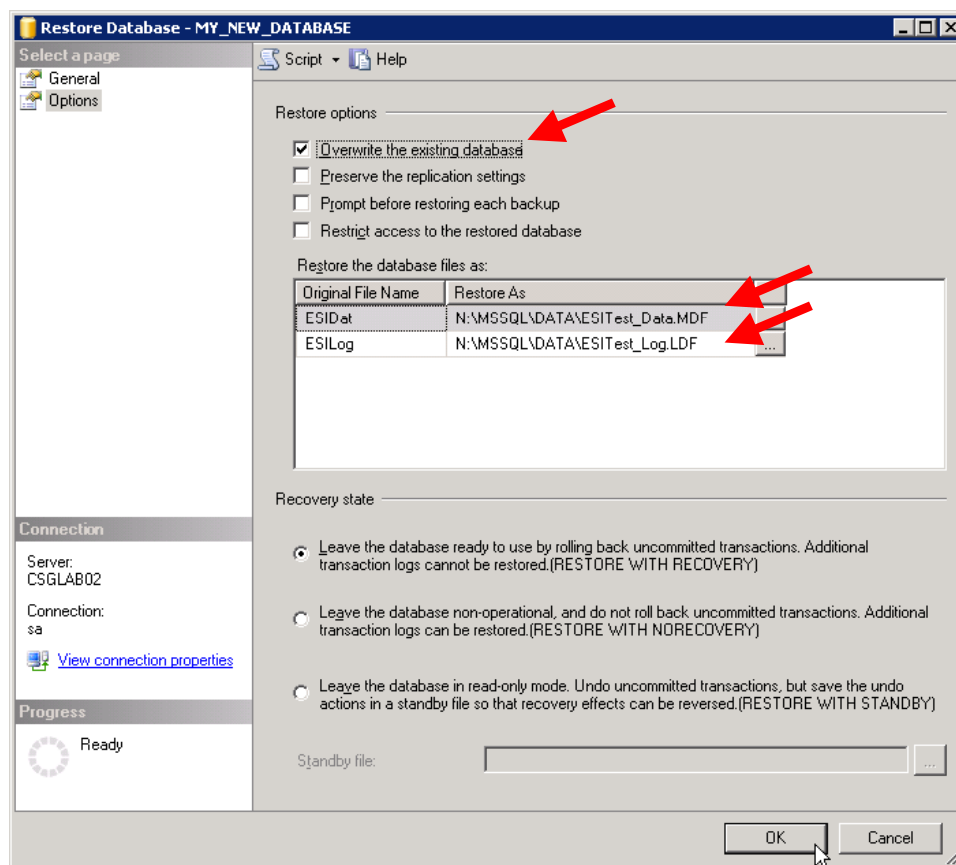
**Fig. 6:** SQL Server does not select this box by default. It must be selected in order to restore the backup file.

8. If you intend to restore this new database over an existing database of the same name, select “Overwrite the existing database.”

Within the Options tab of the Restore Database window.

9. Make sure the “Restore As” values reflect true folder locations.

These are carried over with the backup file, so they often need to be changed. Use the server’s default data directory.



**Fig. 7:** Ensure the various options are set correctly, especially the Restore As folder locations.

10. Click **OK** to begin the database restore.

The progress indicator in the lower left corner will keep you abreast of the database restore status.

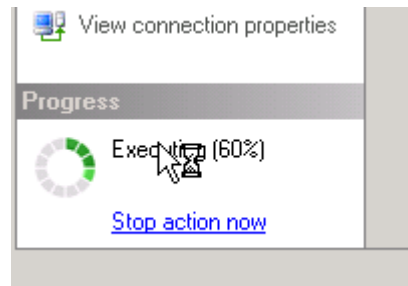


Fig. 8: The Progress indicator in the Backup Database window.

**Step 2: Create the sysdba Login if it does not exist.**

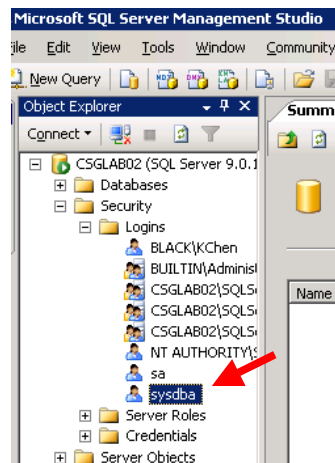


Fig. 9: The sysdba server Login.

**Warning: Complete Step 2 only if the sysdba login does not exist.**

11. If the sysdba Login doesn't already exist, create it by right-clicking the **Logins** folder and selecting "**New Login...**".

12. Complete the following values and click **OK**:

Login name: **sysdba**  
SQL Server authentication  
Password: **(enter a password)**  
Confirm password: **(re-enter password)**  
Enforce password policy: **(uncheck this box)**

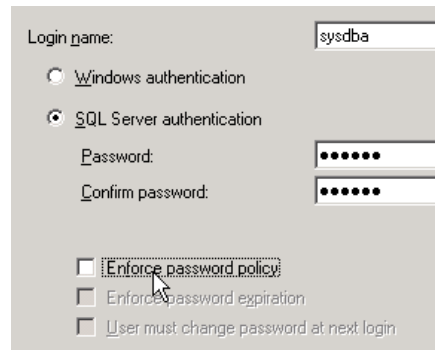


Fig. 10: Creating the sysdba login.

13. The following statement must be executed for the sysdba login on all SQL Servers version 2005. Right-click your SQL Server in the Object Explorer, choose **New Query**, type in the following, and click **Execute** against the **Master** database:

```
GRANT VIEW SERVER STATE TO sysdba
```

### Step 3: Make sysdba the Expandable database owner

14. To change the database owner to “sysdba,” right-click the new database in the Management Studio’s Object Explorer and choose “New Query.”

A new query window will open in the right pane.

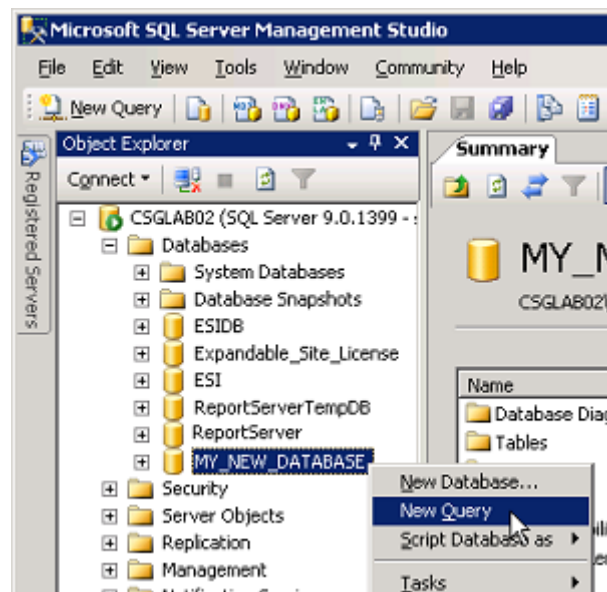


Fig. 11: Opening a new query window against our new database.

15. In the New Query window, type in the following statement and then click the Execute button:

```
EXEC sp_changedbowner 'sysdba'
```

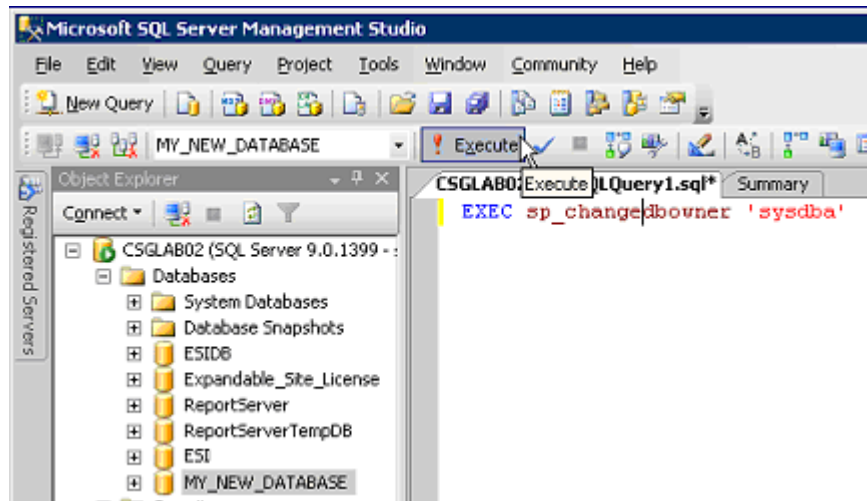


Fig. 12: Changing the new database owner to sysdba.

## The Database Restore is Now Complete

# **Expandable Contact Numbers**

## **Technical Support Hotline**

**(408) 247-3300**

[support@expandable.com](mailto:support@expandable.com)

## **Sales and Administration**

**(408) 261-7880 phone**

**(408) 247-2160 fax**

## **Contact Hours**

**8:00 a.m. to 5:00 p.m. PST**

**Monday through Friday (except holidays)**