



SQL Server Upgrade Guide - Version 2000 to 2005

Tech Note #133—Upgrade SQL Server 2000 to 2005

This document is provided only as a guide to upgrading SQL Server 2000 to 2005 in reference to Expandable requirements. Microsoft installation of upgrade instructions are not included and were not referenced for this document. For complete SQL Server installation or upgrade instructions, please refer to the Microsoft website.

Expandable Software, Inc.
1171 Homestead Road
Santa Clara, CA 95050-5478
Customer Support: 408-247-3300

Table of Contents

<u>UPGRADE GUIDE - SQL SERVER 2000 TO 2005</u>	1
<u>QUESTIONS AND ANSWERS</u>	1
Q: How long does the upgrade take?	1
Q: Do I need a backup before beginning the SQL Server upgrade?	1
Q: Is SQL Server 2005 compatible with my version of Expandable?	1
<u>STEP 1: INSERT THE SQL SERVER 2005 CD AND ANSWER THE PROMPTS</u>	2
<u>APPENDIX A: MSSQLSERVER SERVICE WILL NOT START</u>	13

READ THESE PAGES FIRST

SQL Server Upgrade Guide - Version 2000 to 2005

Upgrade SQL Server from 2000 to 2005

Questions and Answers

Q: What does this upgrade accomplish?

A: This procedure documents upgrading an existing instance of SQL Server 2000 to SQL Server 2005.

Q: How long does the upgrade take?

A: Between one half and one full hour. There are numerous prompts, requiring input from the user.

Q: Do I need a backup before beginning the SQL Server upgrade?

A: Yes. It is good practice to always make copies of your databases before beginning any type of upgrade process, whether it be SQL Server or Expandable that's being upgraded.

Q: Is SQL Server 2005 compatible with my version of Expandable?

A: See the SQL Server Compatibility Table below.

Q: During installation, I'm prompted for installation folders. What should I choose?

A: If your server uses a root drive along with a large "data drive," set the data destination to your "data drive." Otherwise, you may accept the defaults.

SQL Server Compatibility Table

Expandable Server Version	SQL Server 2005	SQL Server 2000	SQL Server 7	Expandable Client Version	Crystal Reports Version
8.1.2	Yes	Yes	No	8.1.2	10
8.1.1 CP20050819A to 8.1.2	<i>unknown</i>	Yes	No	8.0	8.5
8.0 to 8.1.1 CP20050712	<i>unknown</i>	Yes	Yes	8.0	8.5

NOTE: This document should be used as a guide only and not as an instruction manual. Your upgrade process may include more or less prompts than those shown below. For complete instructions, see Microsoft's web page <http://www.microsoft.com/sql/solutions/upgrade/default.mspx> (search: *Upgrading to SQL Server 2005*).

Step 1: Insert the SQL Server 2005 CD and answer the prompts

1. Click **Server components, tools, Books Online, and samples** in the **Install** menu.



Fig. 1: The SQL Server 2005 Installation main menu.

2. Accept the End User License Agreement and click **Next**.

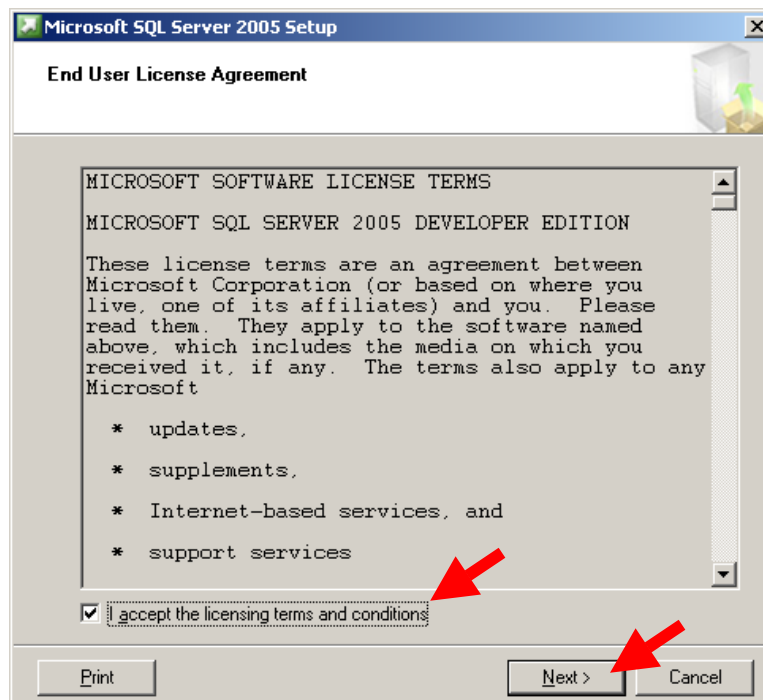


Fig. 2: The End User License Agreement must be accepted before you can continue.

3. Click **Next** at the Installing Prerequisites window to installed the SQL Server 2005 prerequisites.

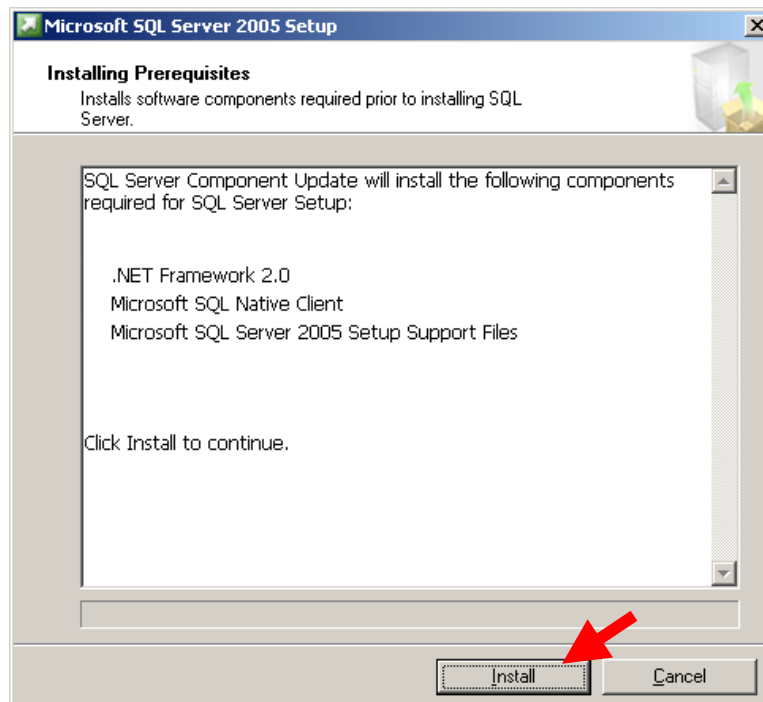


Fig. 3: Click **Install** to begin the prerequisites installation.

4. Click **Next** when the prerequisites are finished installing.

A System Configuration Check will take place next. Wait until this step completes.

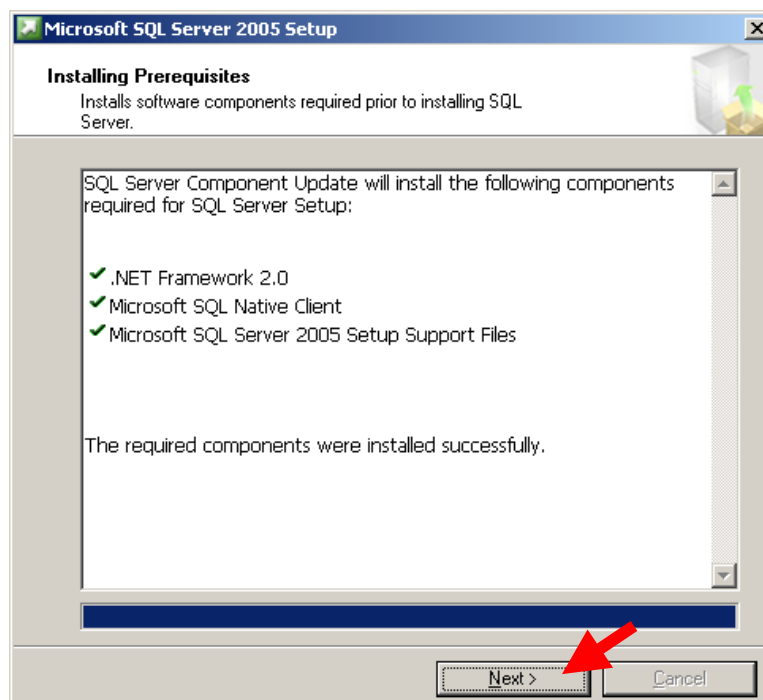


Fig. 4: Click **Next** after installing prerequisites.

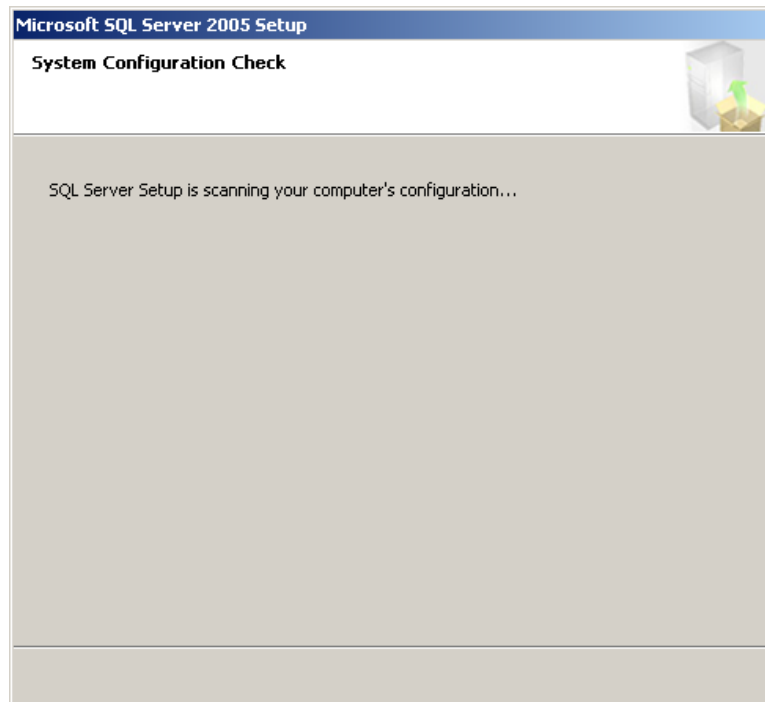


Fig. 5: A System Configuration Check will automatically take place.

5. Click **Next** at the Welcome screen.

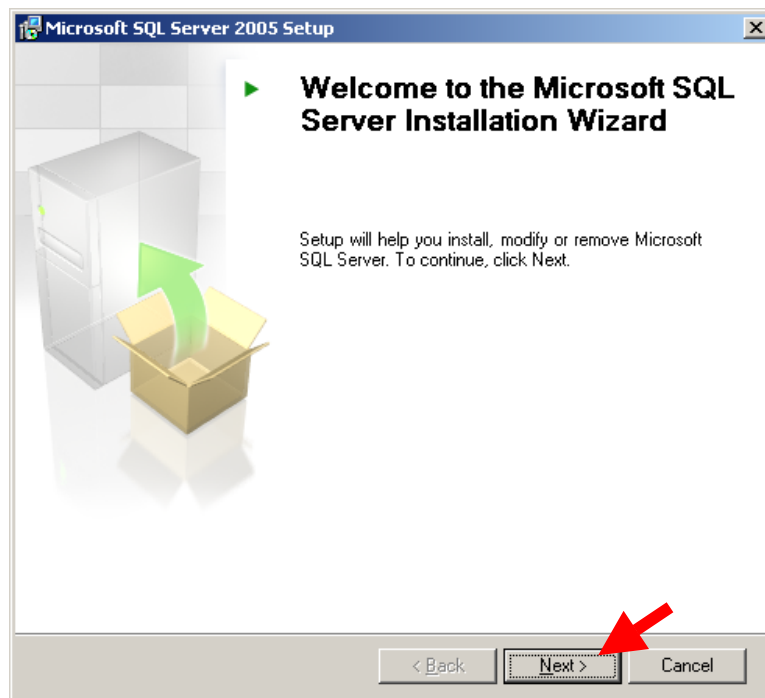


Fig. 6: The Welcome screen. Click Next.

6. Once the System Configuration Check is complete, click **Next**.

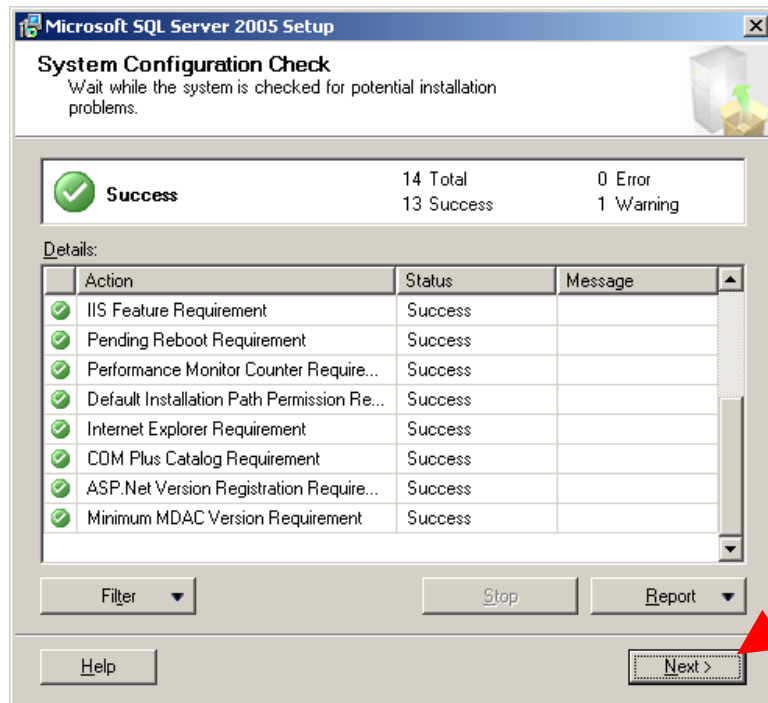


Fig. 7: The System Configuration check.

7. Make sure the information displayed in the Registration Information is correct and click **Next**.

The Name, Company, and Product Key values should already be completed.

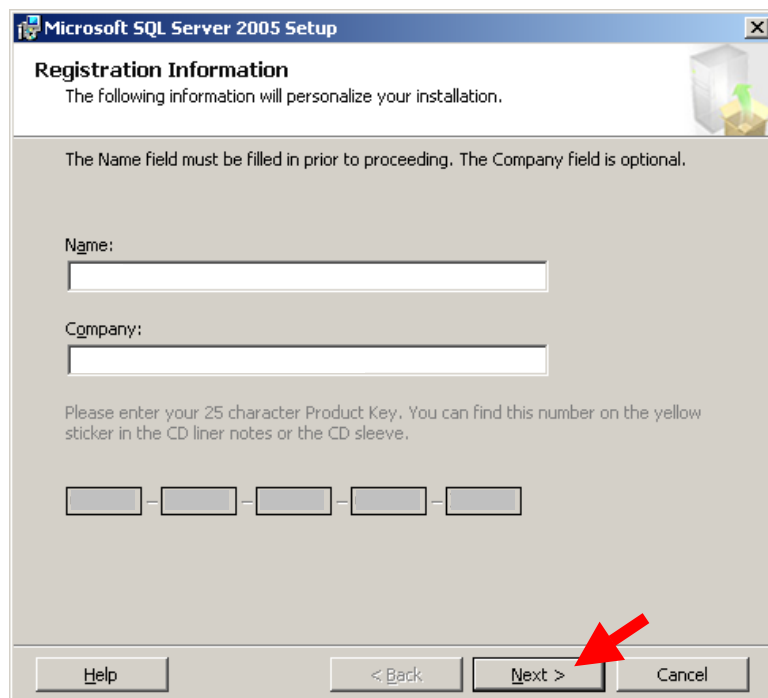


Fig. 8: The Registration Information window. Click Next after confirming the correct information.

8. Select the appropriate components to install and click **Next**.

At the very least, select **SQL Server Database Services**. (Integration Services is required for scheduling Database Maintenance Plans.)

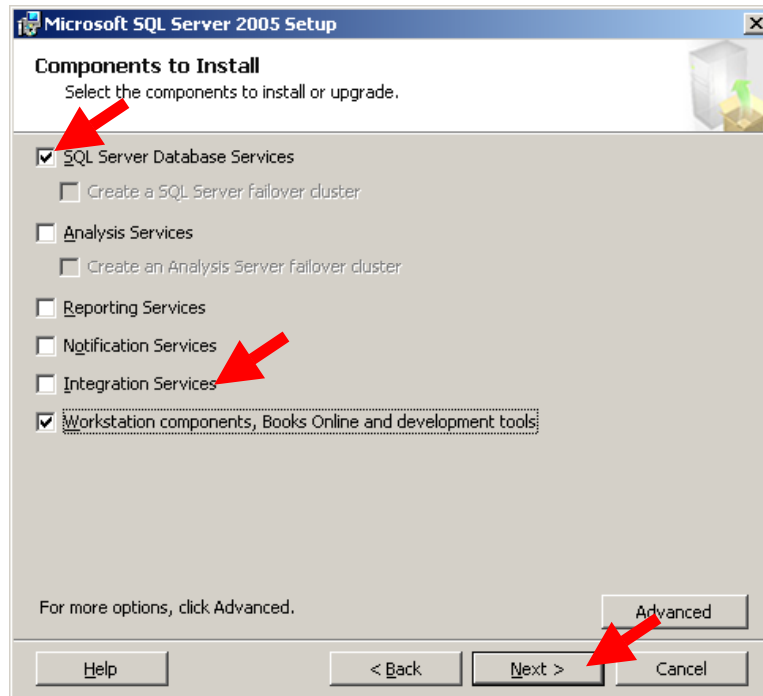


Fig. 9: Choosing the necessary services to install.

9. Select the desired instance for your server and click **Next**.

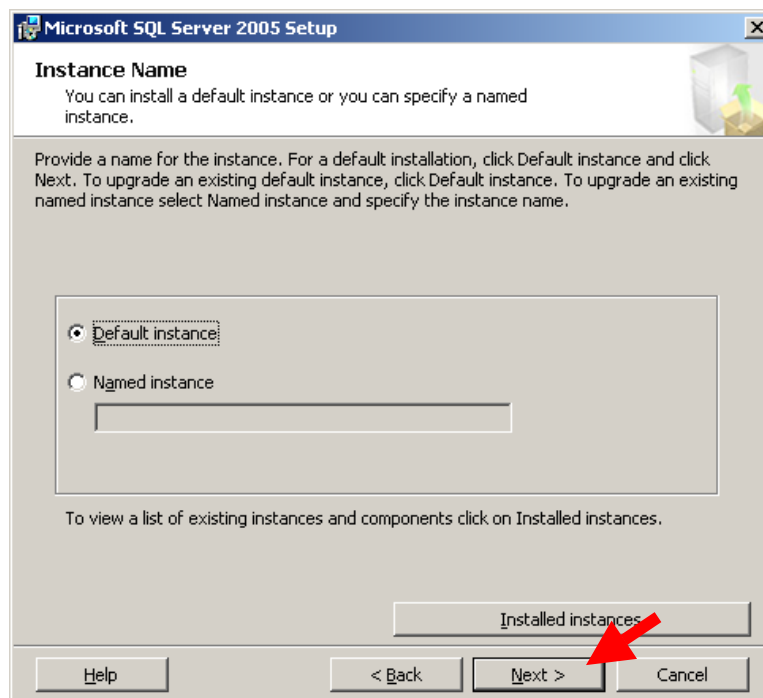


Fig. 10: Upgrading the default instance. Read the instructions carefully before continuing.

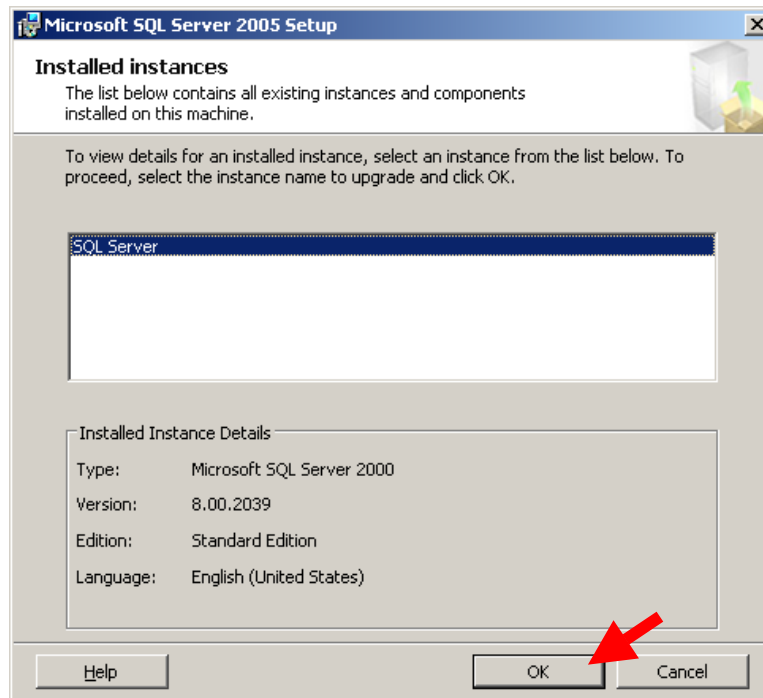


Fig. 11: Clicking the **Installed instances** button in Fig. 10: above displays the currently installed instance(s) of SQL Server.

- At the **Existing Components** screen, select the SQL Server version to be upgraded and click **Next**.

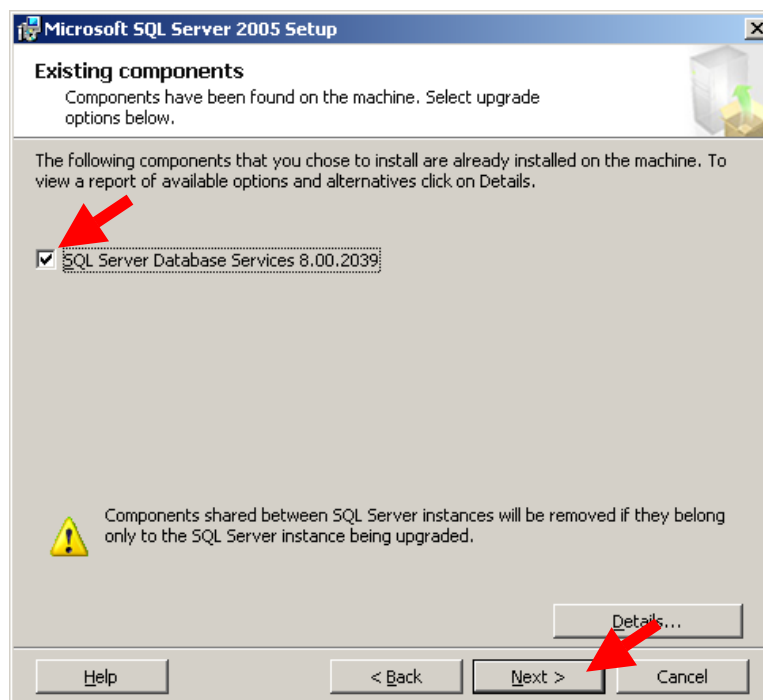


Fig. 12: Existing SQL Server components are displayed that will be upgraded.

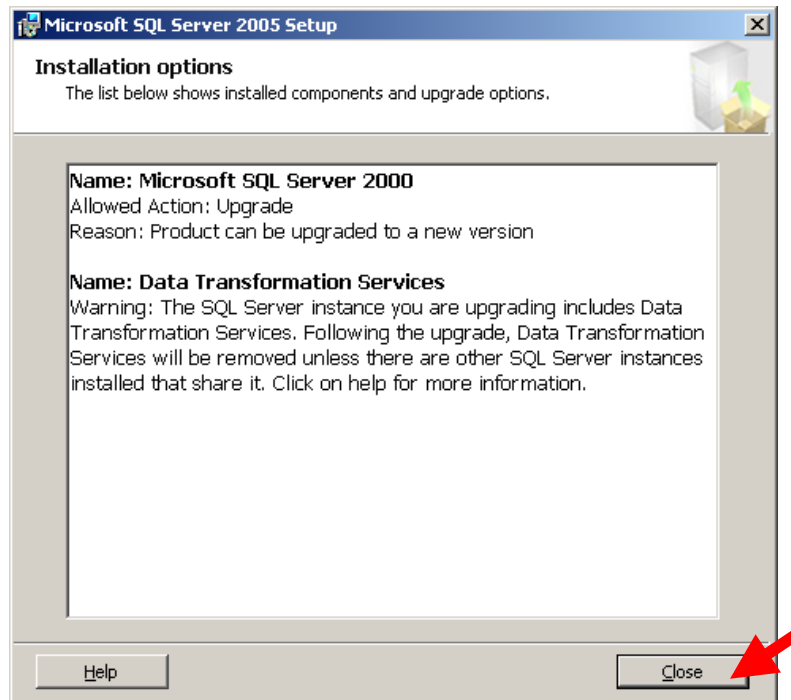


Fig. 13: Click the Details button shown in Fig. 12: above for clarification.

11. You will need to **provide a valid login and password** to execute this upgrade. Click **Next**.

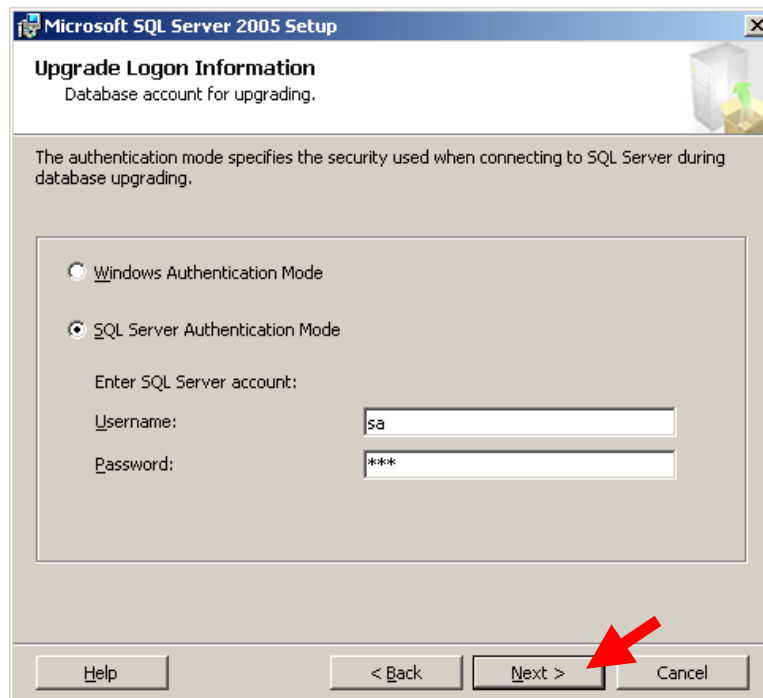
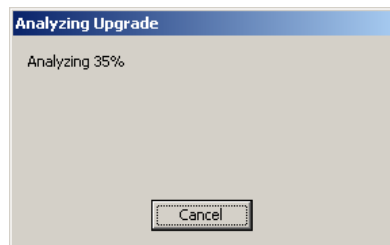
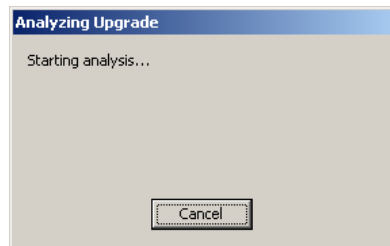
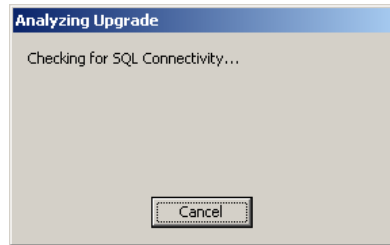


Fig. 14: Click Next after deciding on an authentication mode.

12. The SQL Server upgrade will begin. Wait while the splash screens are updated.



13. Choose an account to use for the SQL services and click **Next**.

For an Expandable database server, choose the same values as those shown in Fig. 15: below.

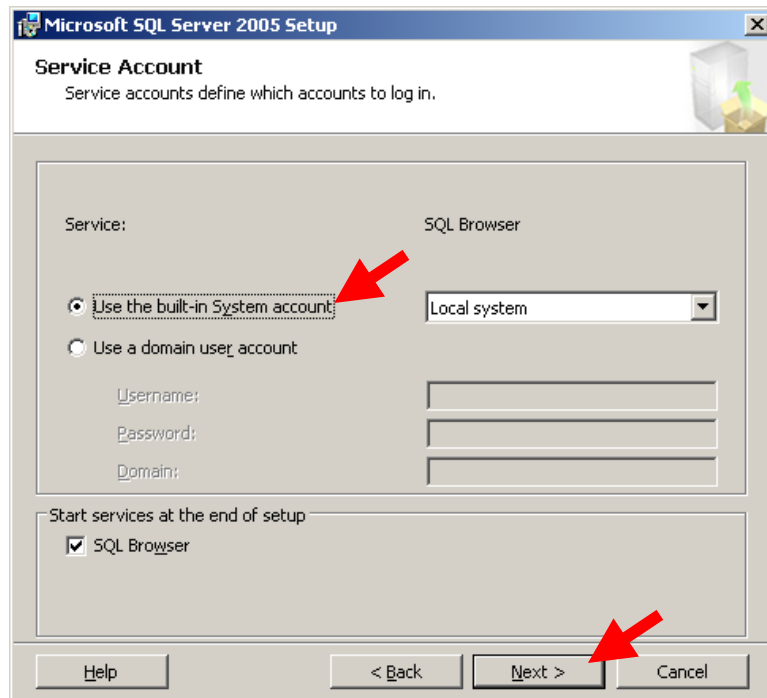


Fig. 15: Specifying an account to use for SQL services.

14. Decide whether you want to send error reports and/or feature usage data to Microsoft and click **Next**.

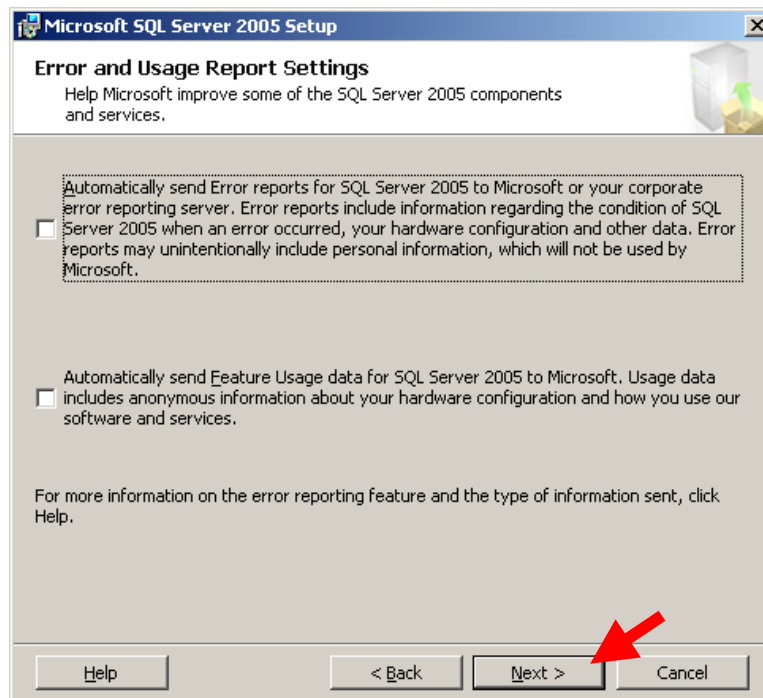


Fig. 16: In this window, we've opted to prevent SQL Server from sending usage data to Microsoft.

15. Once the installation is ready to begin, click **Install**.

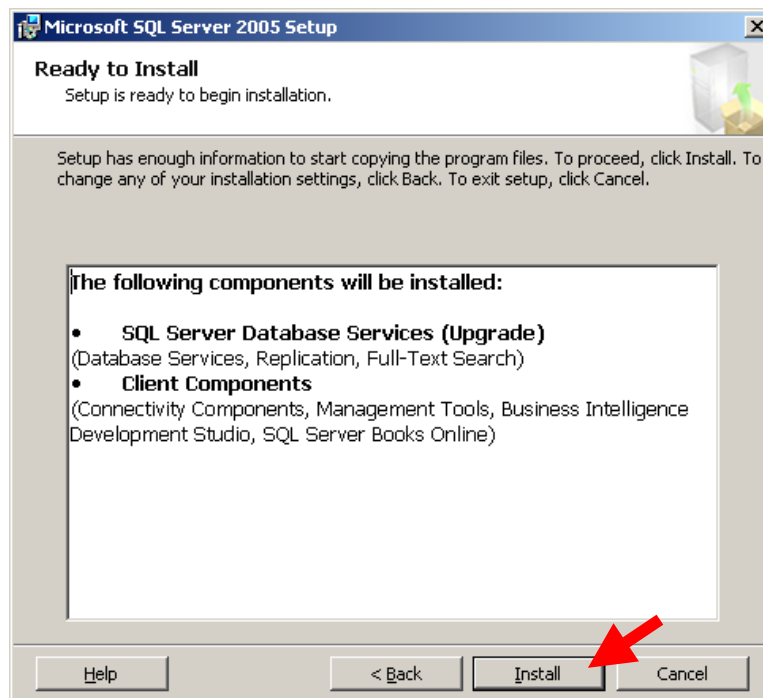


Fig. 17: Review the components to be installed and click Next.

16. SQL Server displays a status as the upgrade progresses. Click **next** when the upgrade completes.

If you are presented with a prompt to swap installation CD's, do so.

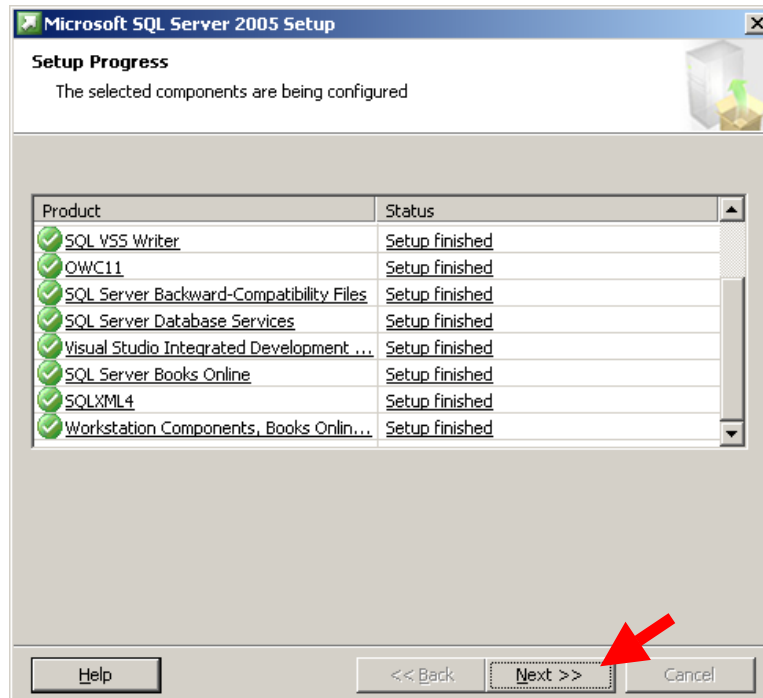


Fig. 18: The upgrade has completely finished. The Next button is now enabled.



Fig. 19: You may be presented with the prompt to insert another disc during installation.

17. When the upgrade is complete, you will be presented with the Completing Microsoft SQL Server 2005 Setup window. Click **Finish** after reviewing the information.

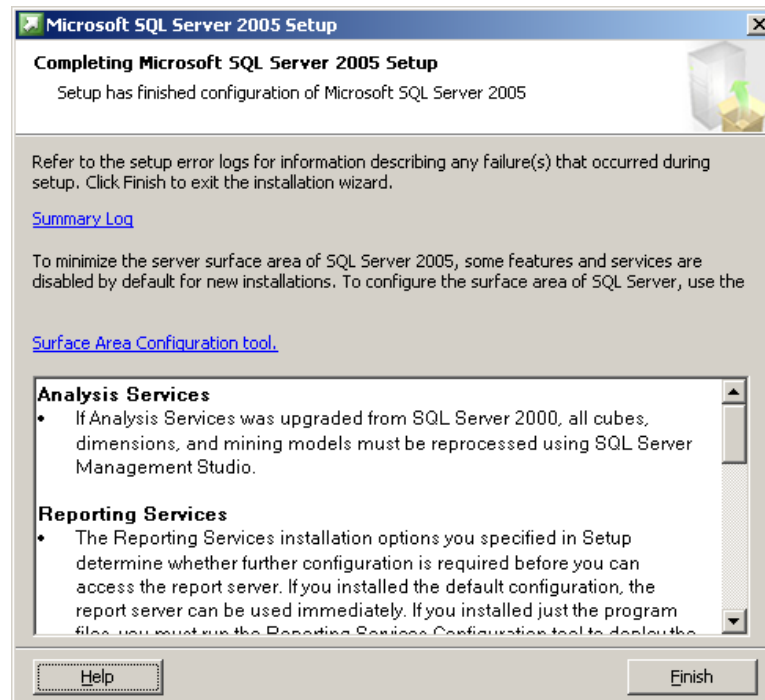


Fig. 20: The SQL Server 2005 upgrade process is finally complete.

18. After creating the sysdba login, log into SQL Server Management Studio as “sa” and execute the following statement:

```
USE master GRANT VIEW SERVER STATE TO sysdba
```

19. Install the latest service pack.

THE UPGRADE IS NOW COMPLETE

Appendix A: MSSQLServer Service Will Not Start

Conditional constraint: The Event Log must display the following error message in order for the suggested fix to be effective:

“SQL Server could not spawn FRunCM thread. Check the SQL Server error log and the Windows event logs for information about possible related problems.”

Solution: Disable the VIA protocol in the SQL Server Configuration Manager.

20. Click [Start | Programs | Microsoft SQL Server 2005 | Configuration Tools | SQL Server Configuration Manager](#).

21. Right-click VIA and choose **Disable** from the pop-up menu.

Your screen should look similar to the following:

